

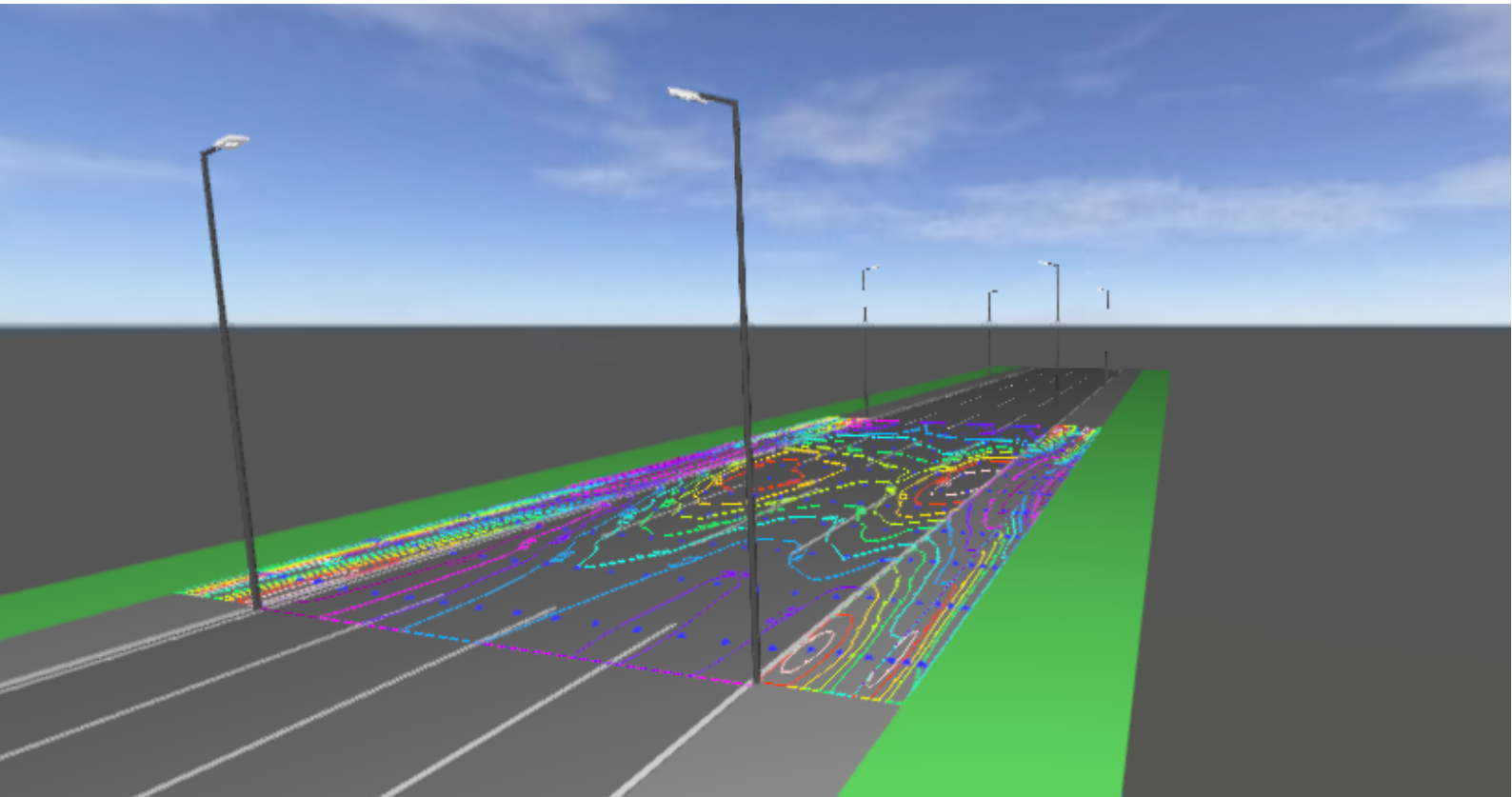
Operator:
Dave

HongKong bosunlighting
co.,LTD
+86 18676024888
sale@bosunlighting.com

Date:
2019-09-08



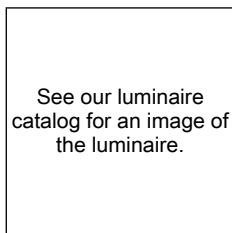
MOONRIVER-60W 14M STREET and 2line sidewalk 2line bikeway 2line greenbelt with 11M pole



Content

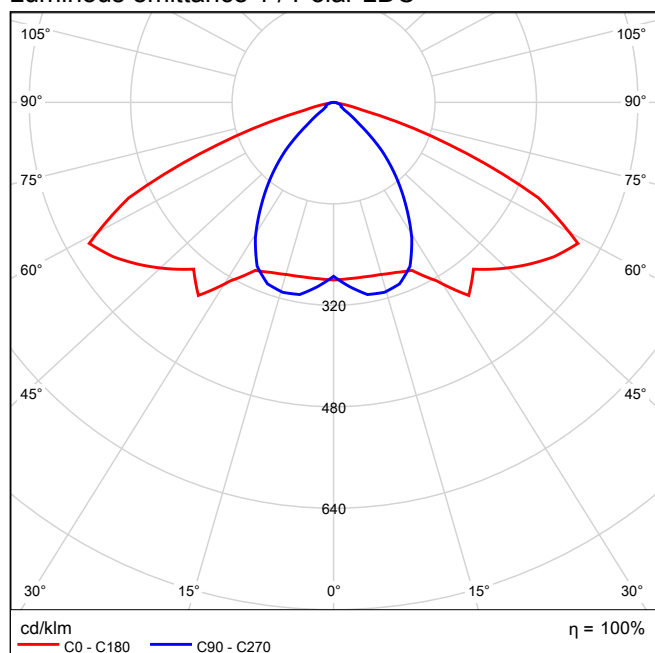
MOONRIVER-60W 14M STREET and 2line sidewalk 2line bikeway 2line greenbelt with 11M pole	
MOONRIVER-60W 14M STREET and 2line sidewalk 2line bikeway 2line greenbelt with 11M pole	
九高 - (1x49).....	3
街道 1: 备选项 1	
Planning results.....	6
街道 1: 备选项 1 / bikeway-2 (P4)	
Results summary.....	8
Table.....	9
Isolines.....	10
Value chart.....	11
街道 1: 备选项 1 / sidewalk-2 (P4)	
Results summary.....	12
Table.....	13
Isolines.....	14
Value chart.....	15
街道 1: 备选项 1 / street (M4)	
Results summary.....	16
Table.....	17
Isolines.....	22
Value chart.....	31
街道 1: 备选项 1 / sidewalk-1 (P4)	
Results summary.....	40
Table.....	41
Isolines.....	42
Value chart.....	43
街道 1: 备选项 1 / bikeway-1 (P4)	
Results summary.....	44
Table.....	45
Isolines.....	46
Value chart.....	47

九高 1x49

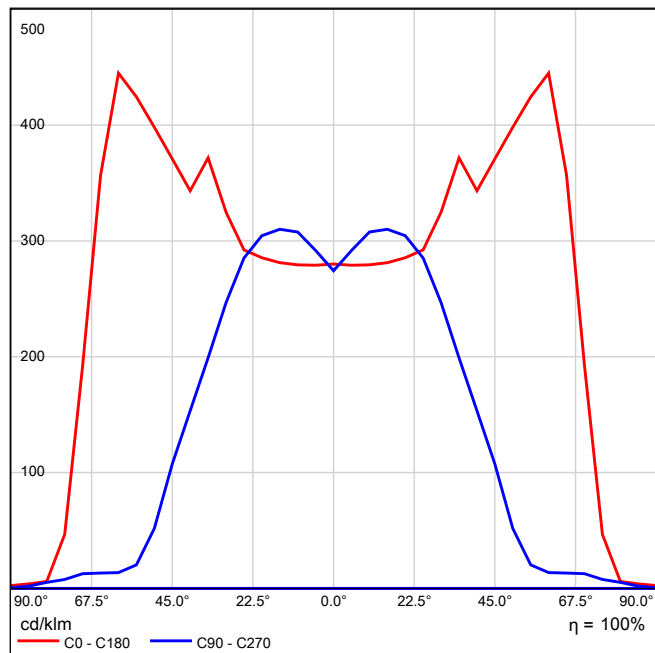


Light output ratio: 100.11%
Lamp luminous flux: 7843 lm
Luminaire luminous flux: 7852 lm
Power: 58.8 W
Luminous efficacy: 133.6 lm/W

Luminous emittance 1 / Polar LDC

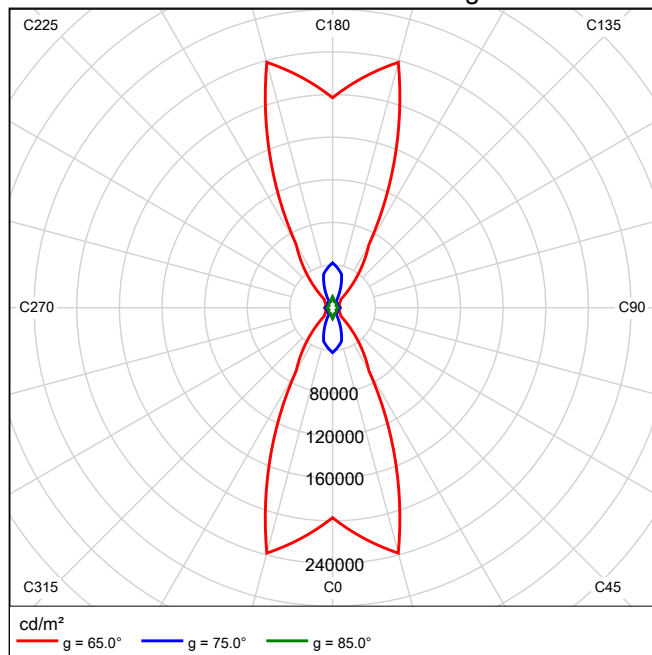


Luminous emittance 1 / Linear LDC



It is not possible to generate a cone diagram, as the light distribution is asymmetrical.

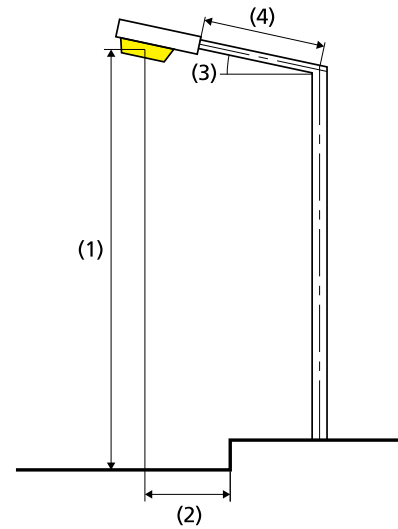
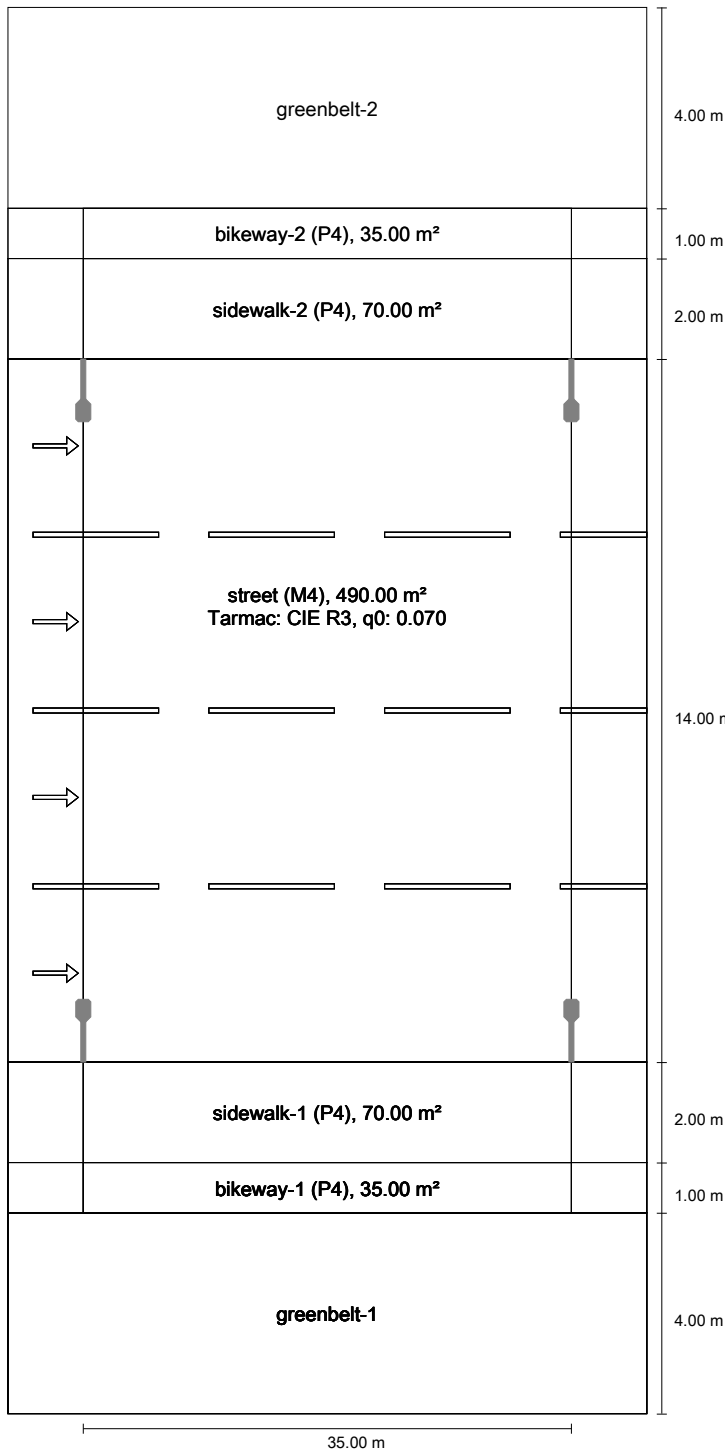
Luminous emittance 1 / Luminance diagram



It is not possible to generate a UGR diagram, as the light distribution is asymmetrical.

街道 1 according to EN 13201:2015

九高



Lamp:	1x49
Luminous flux (luminaire):	7851.98 lm
Luminous flux (lamp):	7843.10 lm
Operating Hours	
4000 h:	100.0 %, 58.8 W
W/km:	3409.1
Arrangement:	both sides opposite
Pole distance:	35.000 m
Boom inclination (3):	15.0°
Boom length (4):	1.008 m
Light centre height (1):	11.000 m
Light overhang (2):	1.000 m

ULR:	0.00
ULOR:	0.00
Maximum luminous intensities	
at 70° and above	416 cd/klm *
at 80° and above	45.5 cd/klm *
at 90° and above	7.73 cd/klm *
Luminous intensity class:	G*3

Any direction forming the specified angle from the downward vertical, with the luminaire installed for use.

* Luminous intensity values in [cd/klm] for calculating luminous intensity class refer to the output flux of the luminaire, according EN 13201:2015.

Arrangement complies with glare index class D.4

Results for valuation fields

Light loss factor: 0.67

bikeway-2 (P4)

Emin [lx] ≥ 1.00	Em [lx]
✓ 6.77	* 8.64

sidewalk-2 (P4)

Emin [lx] ≥ 1.00	Em [lx]
✓ 8.60	* 11.08

street (M4)

Lm [cd/m²] ≥ 0.75	Uo ≥ 0.40	UI ≥ 0.60	TI [%] ≤ 15	EIR
✓ 0.78	✓ 0.62	✓ 0.61	✓ 6	* 0.75

sidewalk-1 (P4)

Emin [lx] ≥ 1.00	Em [lx]
✓ 8.60	* 11.08

bikeway-1 (P4)

Emin [lx] ≥ 1.00	Em [lx]
✓ 6.77	* 8.64

* Informative, not part of the valuation

Results for energy efficiency indicators

Power density indicator (Dp)	0.013 W/lxm²
Energy consumption density	
Arrangement: 60W Moon river 1_IESNA2002.IES (470.2 kWh/yr)	0.7 kWh/m² yr

bikeway-2 (P4)

Light loss factor: 0.67
Grid: 12 x 3 Points

Emin [lx] ≥ 1.00	Em [lx]
✓ 6.77	* 8.64

* Informative, not part of the valuation

bikeway-2 (P4)

Horizontal illuminance [lx]

23.833	8.77	8.57	8.50	8.19	7.27	6.77	6.77	7.27	8.19	8.50	8.57	8.77
23.500	9.58	9.30	9.14	8.75	7.77	7.30	7.30	7.77	8.75	9.14	9.30	9.58
23.167	10.4	10.0	9.72	9.28	8.27	7.83	7.83	8.27	9.28	9.72	10.0	10.4
m	1.458	4.375	7.292	10.208	13.125	16.042	18.958	21.875	24.792	27.708	30.625	33.542

Grid: 12 x 3 Points

Em [lx]	Emin [lx]	Emax [lx]	g1	g2
8.64	6.77	10.4	0.784	0.650

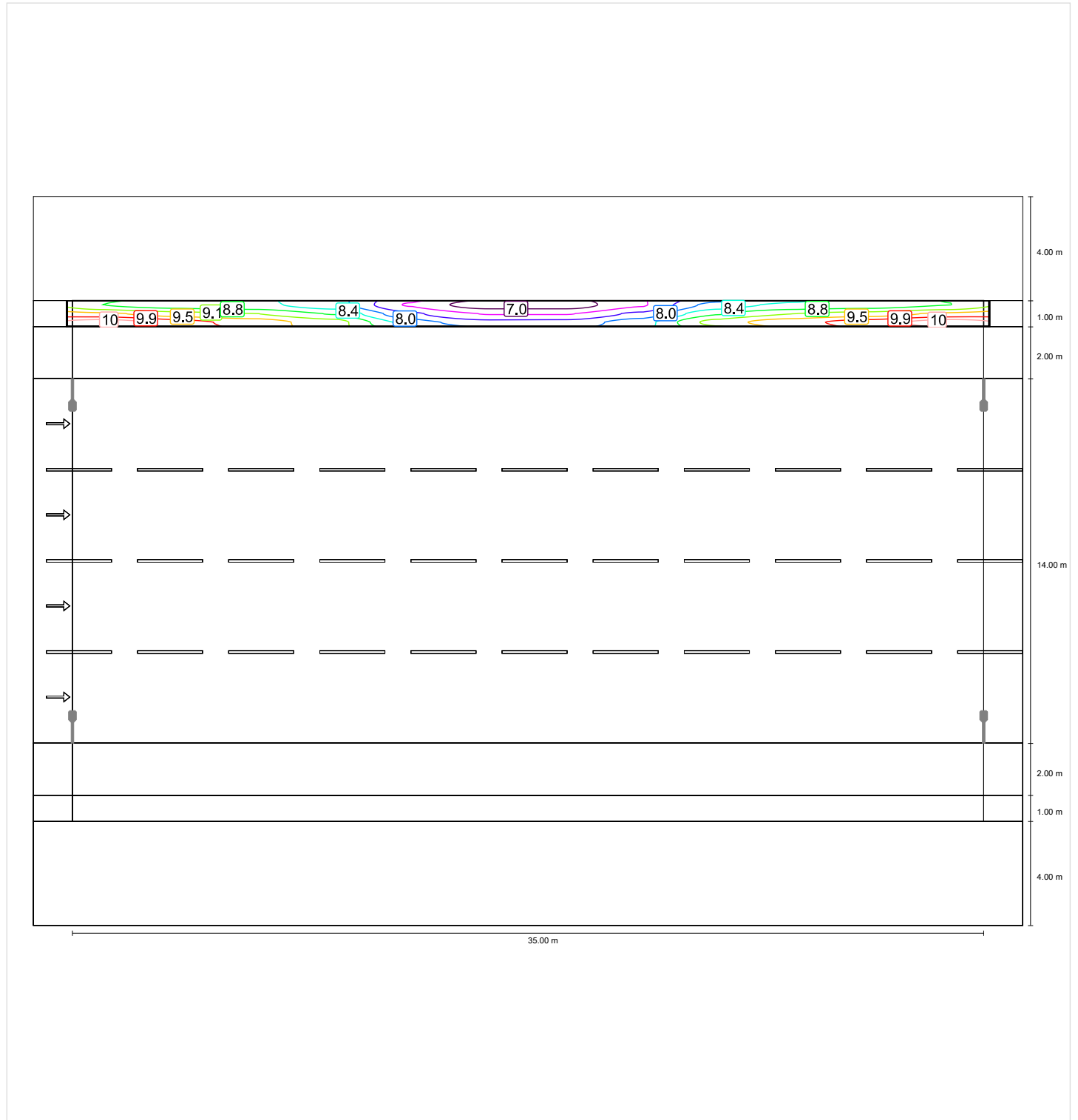
bikeway-2 (P4)

Light loss factor: 0.67
Grid: 12 x 3 Points

Emin [lx] ≥ 1.00	Em [lx]
✓ 6.77	* 8.64

* Informative, not part of the valuation

Horizontal illuminance



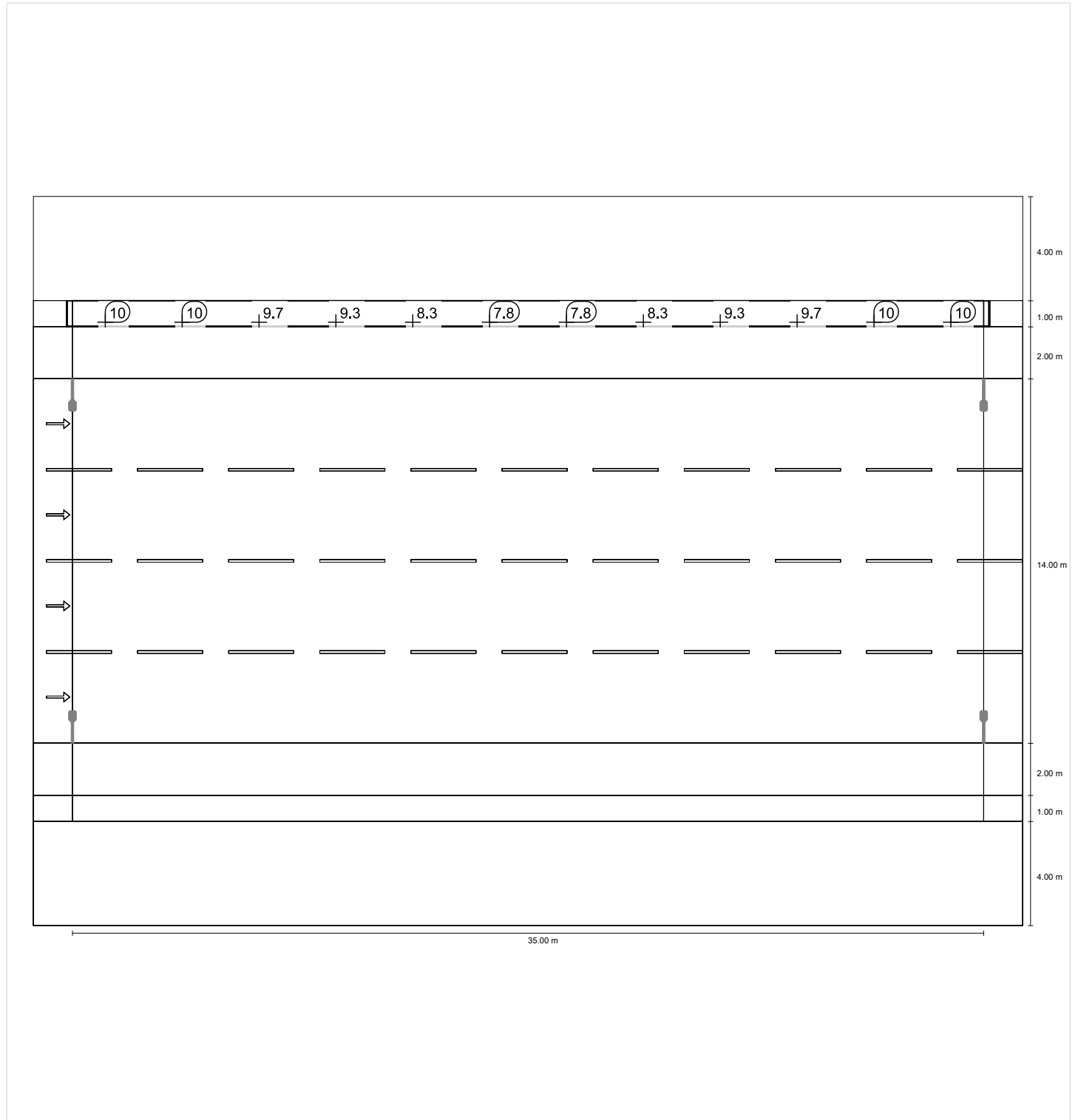
bikeway-2 (P4)

Light loss factor: 0.67
 Grid: 12 x 3 Points

Emin [lx] ≥ 1.00	Em [lx]
✓ 6.77	* 8.64

* Informative, not part of the valuation

Horizontal illuminance



sidewalk-2 (P4)

Light loss factor: 0.67
Grid: 12 x 3 Points

Emin [lx] ≥ 1.00	Em [lx]
✓ 8.60	* 11.08

* Informative, not part of the valuation

sidewalk-2 (P4)

Horizontal illuminance [lx]

22.667	11.7	11.1	10.6	9.82	8.88	8.60	8.60	8.88	9.82	10.6	11.1	11.7
22.000	13.4	12.4	11.6	10.4	9.58	9.37	9.37	9.58	10.4	11.6	12.4	13.4
21.333	14.9	13.5	12.5	11.0	10.2	9.87	9.87	10.2	11.0	12.5	13.5	14.9
m	1.458	4.375	7.292	10.208	13.125	16.042	18.958	21.875	24.792	27.708	30.625	33.542

Grid: 12 x 3 Points

Em [lx]	Emin [lx]	Emax [lx]	g1	g2
11.1	8.60	14.9	0.776	0.576

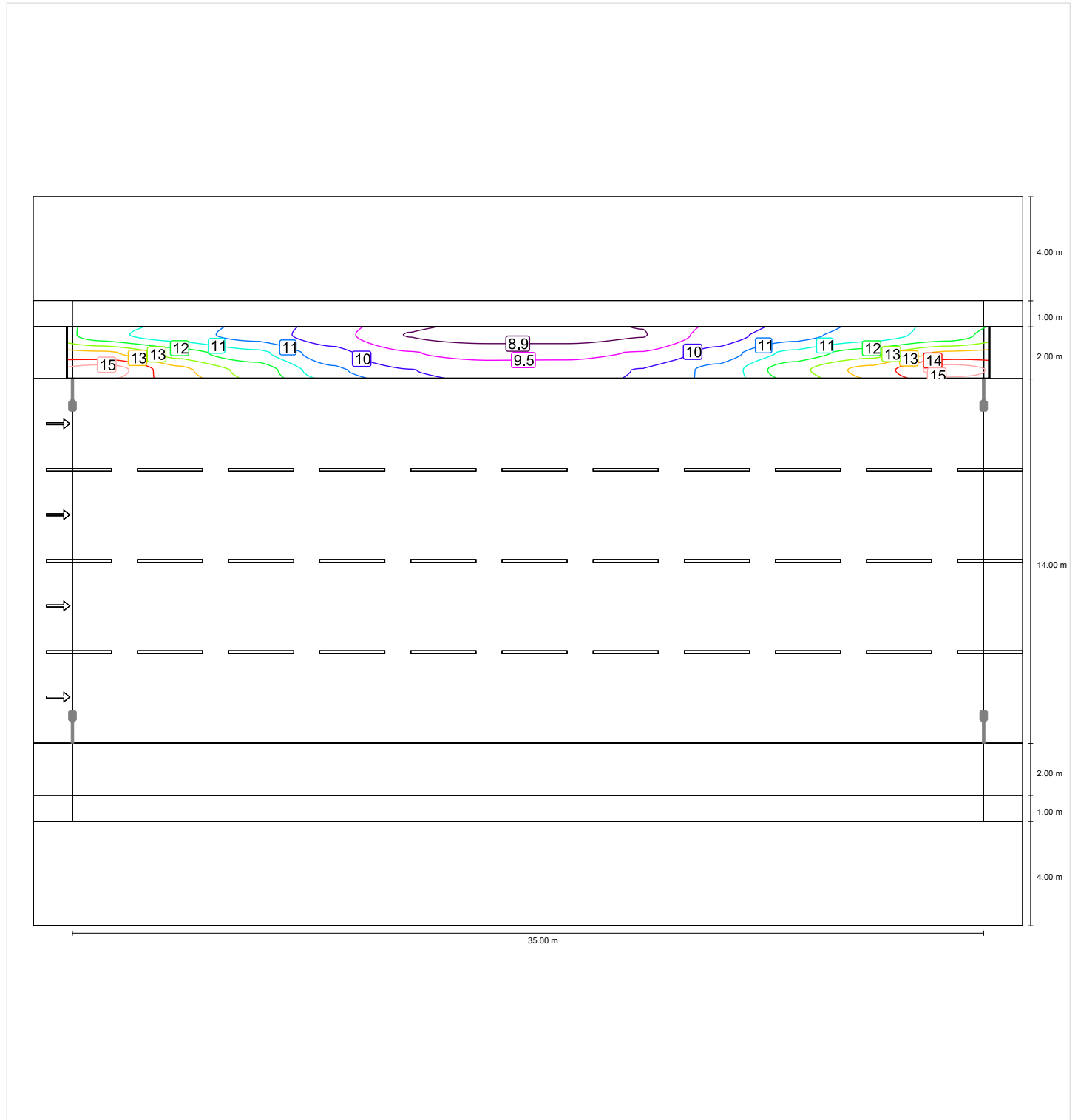
sidewalk-2 (P4)

Light loss factor: 0.67
 Grid: 12 x 3 Points

Emin [lx] ≥ 1.00	Em [lx]
✓ 8.60	* 11.08

* Informative, not part of the valuation

Horizontal illuminance



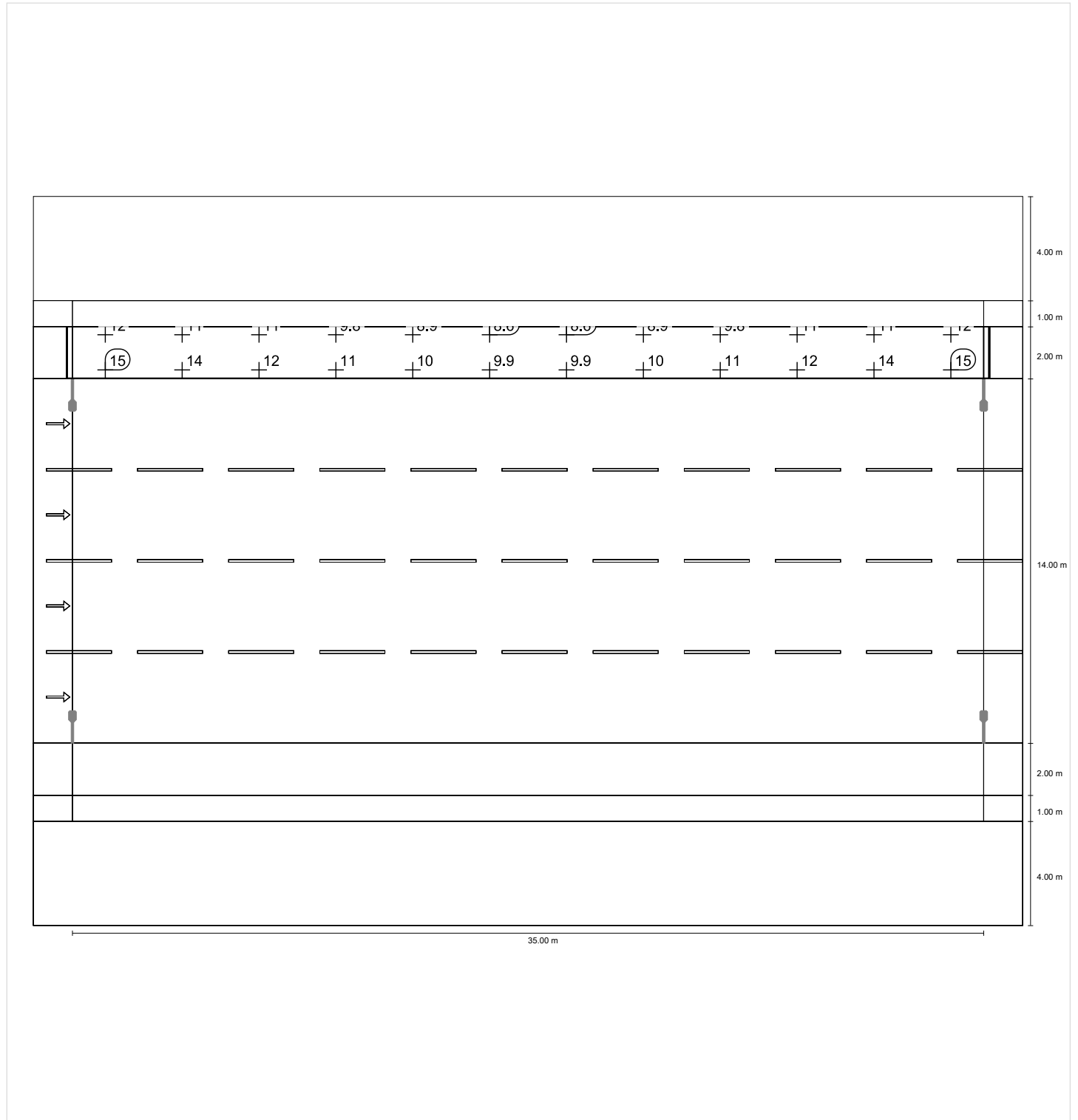
sidewalk-2 (P4)

Light loss factor: 0.67
 Grid: 12 x 3 Points

Emin [lx] ≥ 1.00	Em [lx]
✓ 8.60	* 11.08

* Informative, not part of the valuation

Horizontal illuminance



street (M4)

Light loss factor: 0.67
 Grid: 12 x 12 Points

Lm [cd/m ²] ≥ 0.75	Uo ≥ 0.40	UI ≥ 0.60	TI [%] ≤ 15	EIR
✓ 0.78	✓ 0.62	✓ 0.61	✓ 6	* 0.75

* Informative, not part of the valuation

Assigned observer (4):

Observer	Position [m]	Lm [cd/m ²] ≥ 0.75	Uo ≥ 0.40	UI ≥ 0.60	TI [%] ≤ 15
Observer 1	(-60.000, 8.750, 1.500)	0.78	0.62	0.61	5
Observer 2	(-60.000, 12.250, 1.500)	0.78	0.66	0.73	6
Observer 3	(-60.000, 15.750, 1.500)	0.78	0.66	0.73	6
Observer 4	(-60.000, 19.250, 1.500)	0.78	0.62	0.61	5

street (M4)

Horizontal illuminance [lx]

20.417	16.2	14.6	13.1	11.6	10.8	10.2	10.2	10.8	11.6	13.1	14.6	16.2
19.250	17.1	15.3	14.1	12.0	11.0	10.4	10.4	11.0	12.0	14.1	15.3	17.1
18.083	17.2	15.3	14.3	12.1	11.1	10.6	10.6	11.1	12.1	14.3	15.3	17.2
16.917	17.1	15.2	14.2	12.2	11.2	10.7	10.7	11.2	12.2	14.2	15.2	17.1
15.750	18.1	16.2	14.9	12.7	11.8	11.5	11.5	11.8	12.7	14.9	16.2	18.1
14.583	18.5	16.7	15.3	13.2	12.3	11.7	11.7	12.3	13.2	15.3	16.7	18.5
13.417	18.5	16.7	15.3	13.2	12.3	11.7	11.7	12.3	13.2	15.3	16.7	18.5
12.250	18.1	16.2	14.9	12.7	11.8	11.5	11.5	11.8	12.7	14.9	16.2	18.1
11.083	17.1	15.2	14.2	12.2	11.2	10.7	10.7	11.2	12.2	14.2	15.2	17.1
9.917	17.2	15.3	14.3	12.1	11.1	10.6	10.6	11.1	12.1	14.3	15.3	17.2
8.750	17.1	15.3	14.1	12.0	11.0	10.4	10.4	11.0	12.0	14.1	15.3	17.1
7.583	16.2	14.6	13.1	11.6	10.8	10.2	10.2	10.8	11.6	13.1	14.6	16.2
m	1.458	4.375	7.292	10.208	13.125	16.042	18.958	21.875	24.792	27.708	30.625	33.542

Grid: 12 x 12 Points

Em [lx]	Emin [lx]	Emax [lx]	g1	g2
13.6	10.2	18.5	0.749	0.551

Observer 1

Luminance with dry roadway [cd/m²]

20.417	0.51	0.49	0.51	0.57	0.68	0.81	0.89	0.90	0.82	0.71	0.60	0.56
19.250	0.56	0.56	0.62	0.69	0.83	0.96	1.00	0.97	0.87	0.78	0.65	0.61
18.083	0.61	0.62	0.71	0.81	0.96	1.05	1.03	0.96	0.85	0.78	0.66	0.64
16.917	0.67	0.70	0.78	0.88	0.99	1.03	0.98	0.90	0.80	0.76	0.67	0.67
15.750	0.73	0.76	0.81	0.88	0.97	1.00	0.97	0.89	0.78	0.77	0.70	0.70
14.583	0.72	0.73	0.78	0.82	0.90	0.93	0.94	0.87	0.79	0.76	0.70	0.69
13.417	0.69	0.70	0.71	0.76	0.85	0.88	0.91	0.85	0.78	0.74	0.69	0.68
12.250	0.65	0.65	0.68	0.74	0.82	0.87	0.89	0.82	0.76	0.73	0.66	0.65
11.083	0.63	0.63	0.67	0.74	0.82	0.88	0.87	0.81	0.74	0.73	0.64	0.63
9.917	0.64	0.65	0.72	0.80	0.91	0.97	0.96	0.91	0.82	0.77	0.66	0.64
8.750	0.65	0.67	0.76	0.85	0.98	1.07	1.07	1.00	0.90	0.80	0.68	0.65
7.583	0.60	0.62	0.70	0.80	0.94	1.05	1.09	1.03	0.90	0.76	0.64	0.61
m	1.458	4.375	7.292	10.208	13.125	16.042	18.958	21.875	24.792	27.708	30.625	33.542

Grid: 12 x 12 Points

Lm [cd/m ²]	Lmin [cd/m ²]	Lmax [cd/m ²]	g1	g2
0.78	0.49	1.09	0.625	0.449

Luminance with new lamp [cd/m²]

20.417	0.76	0.73	0.77	0.85	1.02	1.21	1.33	1.34	1.22	1.06	0.90	0.83
19.250	0.84	0.83	0.92	1.03	1.24	1.43	1.49	1.45	1.30	1.17	0.97	0.91
18.083	0.91	0.93	1.06	1.22	1.43	1.56	1.54	1.43	1.27	1.17	0.98	0.96
16.917	0.99	1.04	1.17	1.32	1.48	1.53	1.47	1.35	1.19	1.13	1.00	0.99
15.750	1.09	1.13	1.21	1.31	1.44	1.50	1.44	1.32	1.17	1.16	1.05	1.04
14.583	1.07	1.10	1.16	1.23	1.34	1.40	1.40	1.30	1.18	1.13	1.04	1.03
13.417	1.03	1.04	1.07	1.14	1.27	1.32	1.35	1.27	1.17	1.10	1.02	1.01
12.250	0.97	0.98	1.02	1.10	1.23	1.30	1.33	1.23	1.14	1.10	0.99	0.97
11.083	0.94	0.94	1.01	1.10	1.22	1.31	1.30	1.21	1.11	1.09	0.96	0.94
9.917	0.96	0.97	1.08	1.20	1.35	1.45	1.43	1.35	1.22	1.15	0.98	0.96
8.750	0.98	1.00	1.13	1.26	1.46	1.60	1.59	1.50	1.34	1.20	1.01	0.97
7.583	0.90	0.93	1.04	1.19	1.41	1.57	1.62	1.54	1.34	1.13	0.95	0.91
m	1.458	4.375	7.292	10.208	13.125	16.042	18.958	21.875	24.792	27.708	30.625	33.542

Grid: 12 x 12 Points

Lm [cd/m ²]	Lmin [cd/m ²]	Lmax [cd/m ²]	g1	g2
1.17	0.73	1.62	0.625	0.449

Observer 2

Luminance with dry roadway [cd/m²]

20.417	0.53	0.52	0.57	0.64	0.77	0.90	0.96	0.95	0.84	0.72	0.61	0.57
19.250	0.59	0.60	0.68	0.77	0.91	1.03	1.04	0.99	0.89	0.79	0.66	0.63
18.083	0.66	0.68	0.77	0.87	0.98	1.06	1.03	0.96	0.85	0.79	0.67	0.66
16.917	0.68	0.71	0.78	0.86	0.95	0.99	0.95	0.88	0.78	0.76	0.67	0.66
15.750	0.69	0.71	0.75	0.81	0.89	0.94	0.93	0.85	0.77	0.76	0.68	0.67
14.583	0.68	0.69	0.72	0.76	0.85	0.89	0.91	0.86	0.78	0.74	0.68	0.68
13.417	0.66	0.67	0.70	0.75	0.83	0.88	0.90	0.85	0.78	0.74	0.68	0.67
12.250	0.66	0.67	0.69	0.75	0.84	0.90	0.90	0.83	0.76	0.74	0.67	0.66
11.083	0.65	0.66	0.72	0.80	0.89	0.93	0.90	0.85	0.76	0.74	0.66	0.64
9.917	0.67	0.69	0.78	0.86	0.96	1.03	1.01	0.94	0.84	0.78	0.67	0.66
8.750	0.64	0.66	0.75	0.84	0.97	1.07	1.07	1.00	0.90	0.80	0.67	0.65
7.583	0.56	0.57	0.63	0.72	0.87	0.98	1.04	1.00	0.87	0.74	0.63	0.59
m	1.458	4.375	7.292	10.208	13.125	16.042	18.958	21.875	24.792	27.708	30.625	33.542

Grid: 12 x 12 Points

Lm [cd/m ²]	Lmin [cd/m ²]	Lmax [cd/m ²]	g1	g2
0.78	0.52	1.07	0.663	0.485

Luminance with new lamp [cd/m²]

20.417	0.79	0.78	0.85	0.96	1.16	1.34	1.43	1.42	1.26	1.08	0.91	0.85
19.250	0.89	0.90	1.02	1.15	1.36	1.54	1.56	1.48	1.32	1.18	0.98	0.94
18.083	0.98	1.01	1.15	1.29	1.47	1.58	1.54	1.43	1.27	1.18	1.00	0.99
16.917	1.02	1.05	1.16	1.28	1.42	1.47	1.42	1.32	1.16	1.13	1.00	0.99
15.750	1.03	1.06	1.12	1.21	1.34	1.40	1.39	1.27	1.15	1.13	1.02	1.00
14.583	1.01	1.03	1.07	1.14	1.28	1.33	1.36	1.28	1.16	1.11	1.02	1.01
13.417	0.98	1.00	1.05	1.12	1.25	1.31	1.34	1.27	1.16	1.10	1.02	1.00
12.250	0.99	1.00	1.04	1.12	1.25	1.34	1.35	1.24	1.14	1.11	1.00	0.99
11.083	0.97	0.99	1.08	1.19	1.32	1.38	1.35	1.26	1.13	1.11	0.98	0.95
9.917	1.01	1.03	1.16	1.28	1.44	1.54	1.51	1.40	1.26	1.17	1.00	0.99
8.750	0.96	0.99	1.12	1.25	1.45	1.60	1.60	1.50	1.34	1.20	1.01	0.96
7.583	0.83	0.84	0.94	1.08	1.29	1.47	1.55	1.50	1.30	1.10	0.93	0.88
m	1.458	4.375	7.292	10.208	13.125	16.042	18.958	21.875	24.792	27.708	30.625	33.542

Grid: 12 x 12 Points

Lm [cd/m ²]	Lmin [cd/m ²]	Lmax [cd/m ²]	g1	g2
1.17	0.78	1.60	0.663	0.485

Observer 3

Luminance with dry roadway [cd/m²]

20.417	0.56	0.57	0.63	0.72	0.87	0.98	1.04	1.00	0.87	0.74	0.63	0.59
19.250	0.64	0.66	0.75	0.84	0.97	1.07	1.07	1.00	0.90	0.80	0.67	0.65
18.083	0.67	0.69	0.78	0.86	0.96	1.03	1.01	0.94	0.84	0.78	0.67	0.66
16.917	0.65	0.66	0.72	0.80	0.89	0.93	0.90	0.85	0.76	0.74	0.66	0.64
15.750	0.66	0.67	0.69	0.75	0.84	0.90	0.90	0.83	0.76	0.74	0.67	0.66
14.583	0.66	0.67	0.70	0.75	0.83	0.88	0.90	0.85	0.78	0.74	0.68	0.67
13.417	0.68	0.69	0.72	0.76	0.85	0.89	0.91	0.86	0.78	0.74	0.68	0.68
12.250	0.69	0.71	0.75	0.81	0.89	0.94	0.93	0.85	0.77	0.76	0.68	0.67
11.083	0.68	0.71	0.78	0.86	0.95	0.99	0.95	0.88	0.78	0.76	0.67	0.66
9.917	0.66	0.68	0.77	0.87	0.98	1.06	1.03	0.96	0.85	0.79	0.67	0.66
8.750	0.59	0.60	0.68	0.77	0.91	1.03	1.04	0.99	0.89	0.79	0.66	0.63
7.583	0.53	0.52	0.57	0.64	0.77	0.90	0.96	0.95	0.84	0.72	0.61	0.57
m	1.458	4.375	7.292	10.208	13.125	16.042	18.958	21.875	24.792	27.708	30.625	33.542

Grid: 12 x 12 Points

Lm [cd/m ²]	Lmin [cd/m ²]	Lmax [cd/m ²]	g1	g2
0.78	0.52	1.07	0.663	0.485

Luminance with new lamp [cd/m²]

20.417	0.83	0.84	0.94	1.08	1.29	1.47	1.55	1.50	1.30	1.10	0.93	0.88
19.250	0.96	0.99	1.12	1.25	1.45	1.60	1.60	1.50	1.34	1.20	1.01	0.96
18.083	1.01	1.03	1.16	1.28	1.44	1.54	1.51	1.40	1.26	1.17	1.00	0.99
16.917	0.97	0.99	1.08	1.19	1.32	1.38	1.35	1.26	1.13	1.11	0.98	0.95
15.750	0.99	1.00	1.04	1.12	1.25	1.34	1.35	1.24	1.14	1.11	1.00	0.99
14.583	0.98	1.00	1.05	1.12	1.25	1.31	1.34	1.27	1.16	1.10	1.02	1.00
13.417	1.01	1.03	1.07	1.14	1.28	1.33	1.36	1.28	1.16	1.11	1.02	1.01
12.250	1.03	1.06	1.12	1.21	1.34	1.40	1.39	1.27	1.15	1.13	1.02	1.00
11.083	1.02	1.05	1.16	1.28	1.42	1.47	1.42	1.32	1.16	1.13	1.00	0.99
9.917	0.98	1.01	1.15	1.29	1.47	1.58	1.54	1.43	1.27	1.18	1.00	0.99
8.750	0.89	0.90	1.02	1.15	1.36	1.54	1.56	1.48	1.32	1.18	0.98	0.94
7.583	0.79	0.78	0.85	0.96	1.16	1.34	1.43	1.42	1.26	1.08	0.91	0.85
m	1.458	4.375	7.292	10.208	13.125	16.042	18.958	21.875	24.792	27.708	30.625	33.542

Grid: 12 x 12 Points

Lm [cd/m ²]	Lmin [cd/m ²]	Lmax [cd/m ²]	g1	g2
1.17	0.78	1.60	0.663	0.485

Observer 4

Luminance with dry roadway [cd/m²]

20.417	0.60	0.62	0.70	0.80	0.94	1.05	1.09	1.03	0.90	0.76	0.64	0.61
19.250	0.65	0.67	0.76	0.85	0.98	1.07	1.07	1.00	0.90	0.80	0.68	0.65
18.083	0.64	0.65	0.72	0.80	0.91	0.97	0.96	0.91	0.82	0.77	0.66	0.64
16.917	0.63	0.63	0.67	0.74	0.82	0.88	0.87	0.81	0.74	0.73	0.64	0.63
15.750	0.65	0.65	0.68	0.74	0.82	0.87	0.89	0.82	0.76	0.73	0.66	0.65
14.583	0.69	0.70	0.71	0.76	0.85	0.88	0.91	0.85	0.78	0.74	0.69	0.68
13.417	0.72	0.73	0.78	0.82	0.90	0.93	0.94	0.87	0.79	0.76	0.70	0.69
12.250	0.73	0.76	0.81	0.88	0.97	1.00	0.97	0.89	0.78	0.77	0.70	0.70
11.083	0.67	0.70	0.78	0.88	0.99	1.03	0.98	0.90	0.80	0.76	0.67	0.67
9.917	0.61	0.62	0.71	0.81	0.96	1.05	1.03	0.96	0.85	0.78	0.66	0.64
8.750	0.56	0.56	0.62	0.69	0.83	0.96	1.00	0.97	0.87	0.78	0.65	0.61
7.583	0.51	0.49	0.51	0.57	0.68	0.81	0.89	0.90	0.82	0.71	0.60	0.56
m	1.458	4.375	7.292	10.208	13.125	16.042	18.958	21.875	24.792	27.708	30.625	33.542

Grid: 12 x 12 Points

Lm [cd/m ²]	Lmin [cd/m ²]	Lmax [cd/m ²]	g1	g2
0.78	0.49	1.09	0.625	0.449

Luminance with new lamp [cd/m²]

20.417	0.90	0.93	1.04	1.19	1.41	1.57	1.62	1.54	1.34	1.13	0.95	0.91
19.250	0.98	1.00	1.13	1.26	1.46	1.60	1.59	1.50	1.34	1.20	1.01	0.97
18.083	0.96	0.97	1.08	1.20	1.35	1.45	1.43	1.35	1.22	1.15	0.98	0.96
16.917	0.94	0.94	1.01	1.10	1.22	1.31	1.30	1.21	1.11	1.09	0.96	0.94
15.750	0.97	0.98	1.02	1.10	1.23	1.30	1.33	1.23	1.14	1.10	0.99	0.97
14.583	1.03	1.04	1.07	1.14	1.27	1.32	1.35	1.27	1.17	1.10	1.02	1.01
13.417	1.07	1.10	1.16	1.23	1.34	1.40	1.40	1.30	1.18	1.13	1.04	1.03
12.250	1.09	1.13	1.21	1.31	1.44	1.50	1.44	1.32	1.17	1.16	1.05	1.04
11.083	0.99	1.04	1.17	1.32	1.48	1.53	1.47	1.35	1.19	1.13	1.00	0.99
9.917	0.91	0.93	1.06	1.22	1.43	1.56	1.54	1.43	1.27	1.17	0.98	0.96
8.750	0.84	0.83	0.92	1.03	1.24	1.43	1.49	1.45	1.30	1.17	0.97	0.91
7.583	0.76	0.73	0.77	0.85	1.02	1.21	1.33	1.34	1.22	1.06	0.90	0.83
m	1.458	4.375	7.292	10.208	13.125	16.042	18.958	21.875	24.792	27.708	30.625	33.542

Grid: 12 x 12 Points

Lm [cd/m ²]	Lmin [cd/m ²]	Lmax [cd/m ²]	g1	g2
1.17	0.73	1.62	0.625	0.449

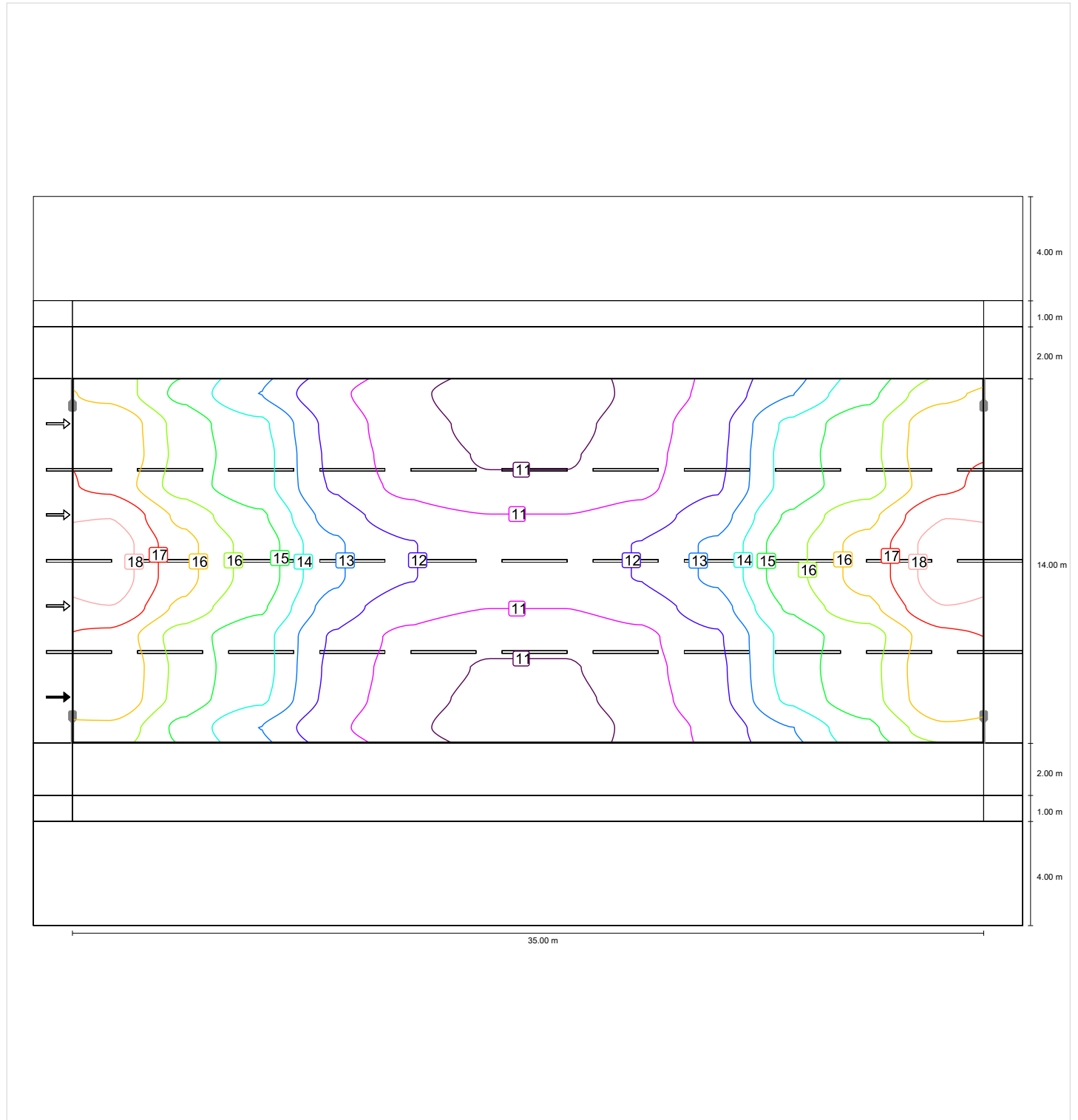
street (M4)

Light loss factor: 0.67
Grid: 12 x 12 Points

Lm [cd/m ²] ≥ 0.75	Uo ≥ 0.40	UI ≥ 0.60	TI [%] ≤ 15	EIR
✓ 0.78	✓ 0.62	✓ 0.61	✓ 6	* 0.75

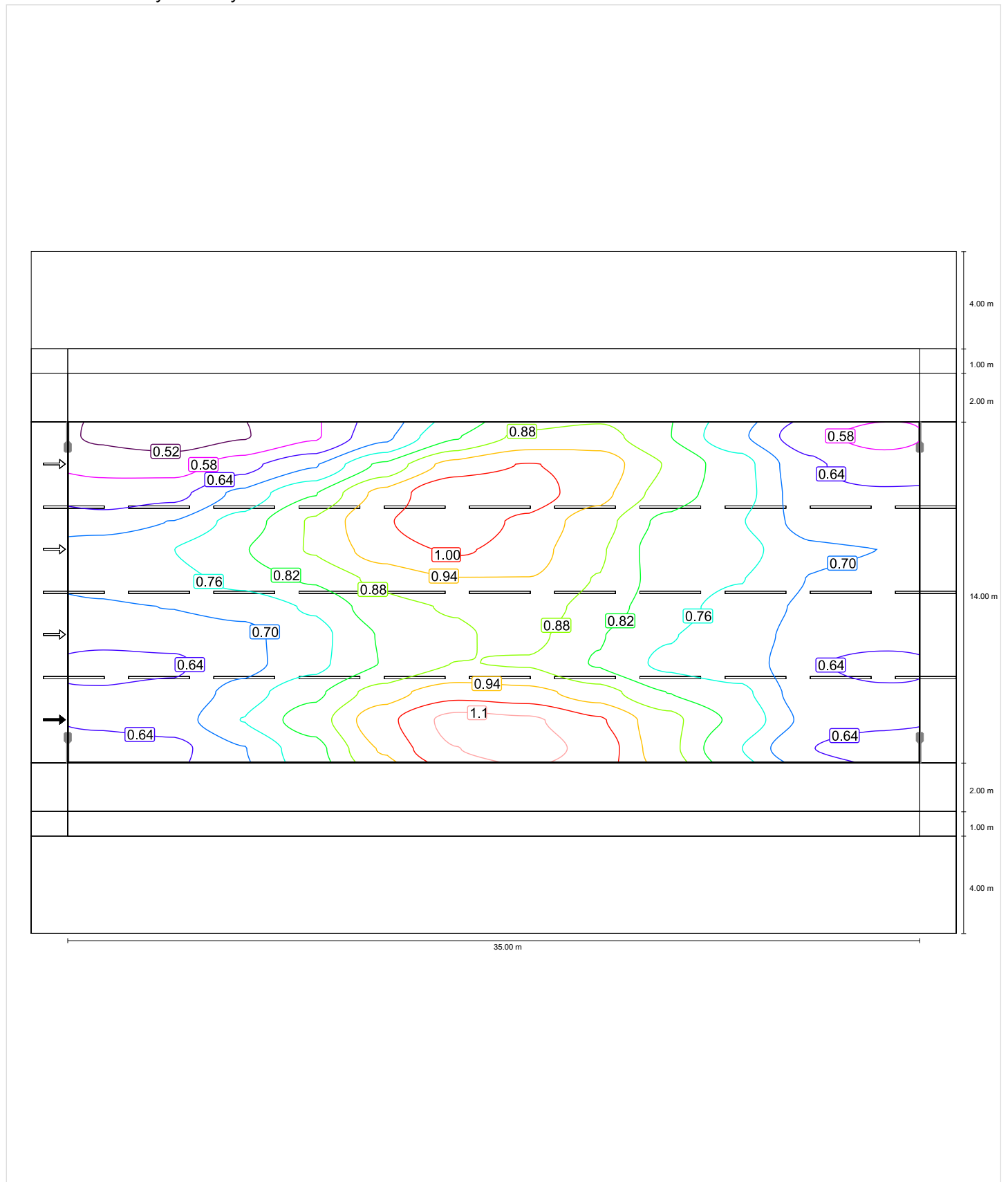
* Informative, not part of the valuation

Horizontal illuminance

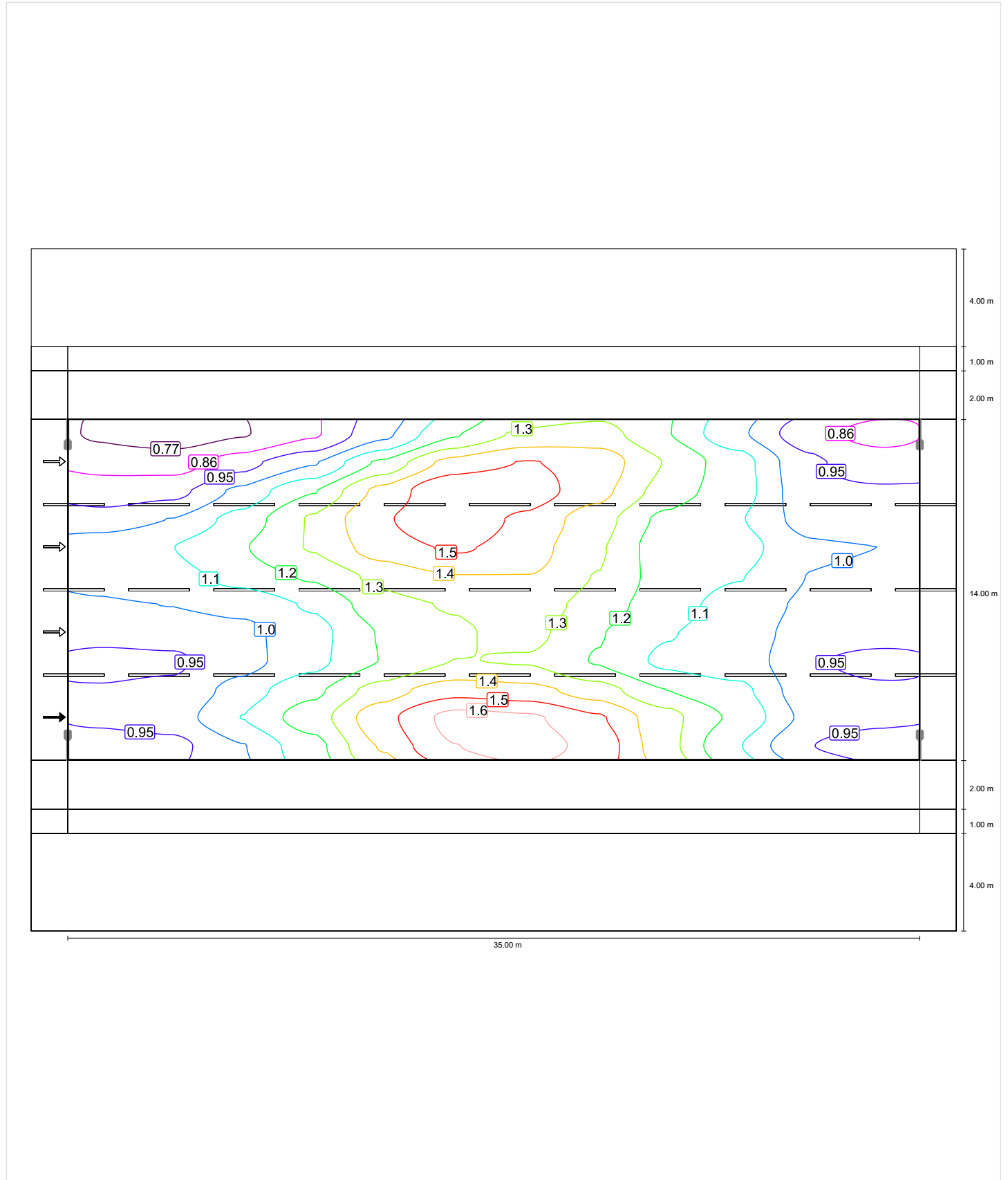


Observer 1

Luminance with dry roadway

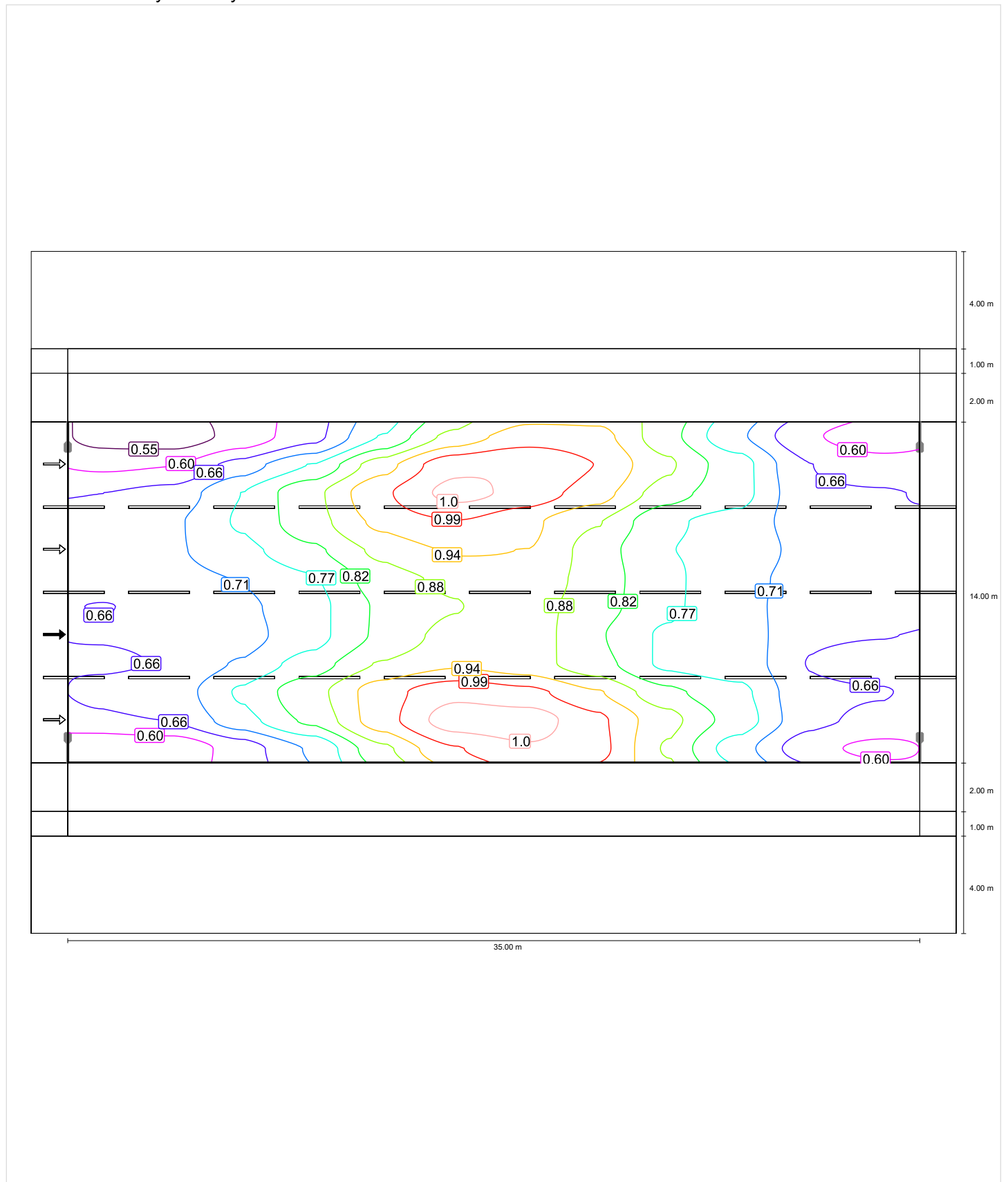


Luminance with new lamp

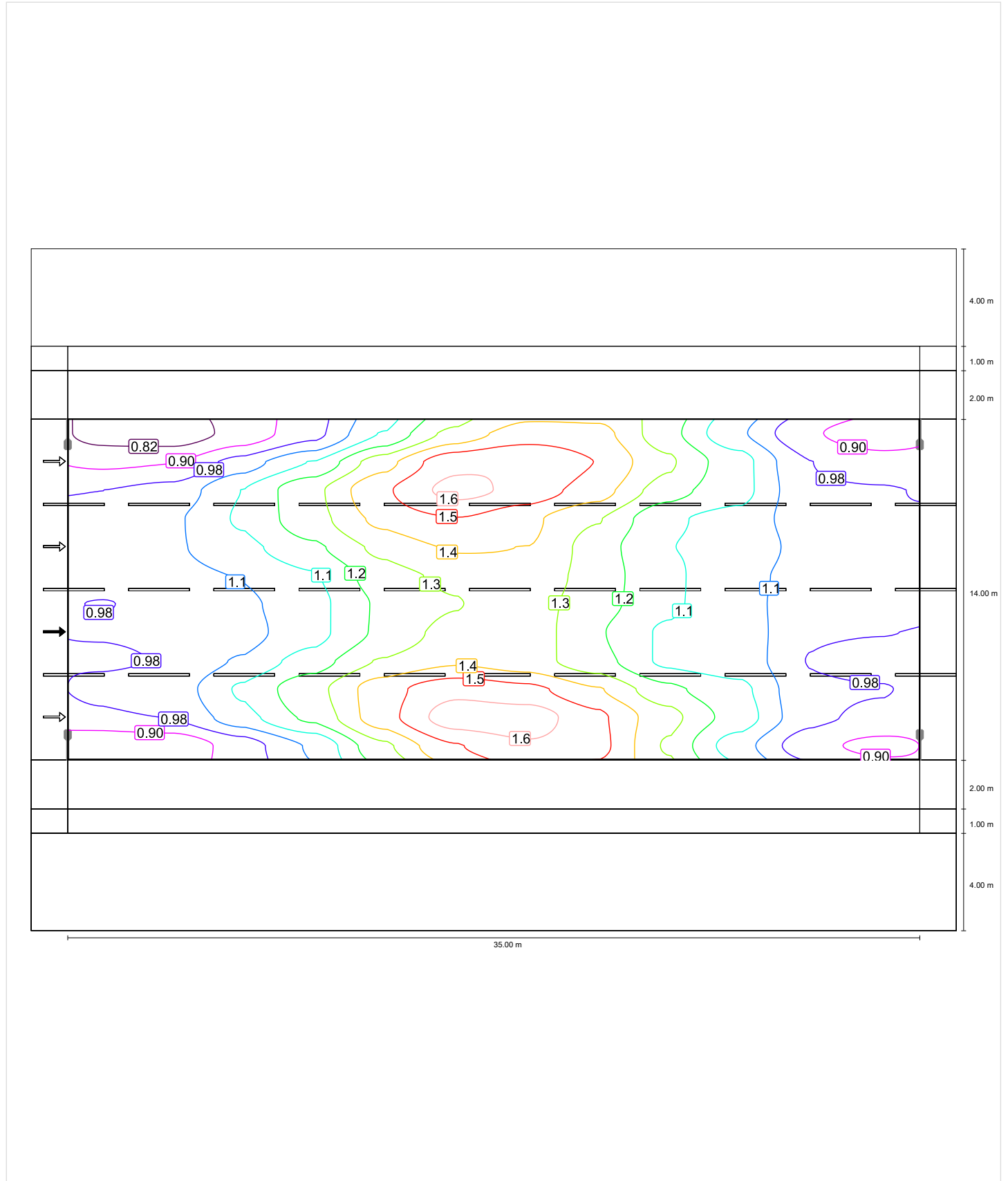


Observer 2

Luminance with dry roadway

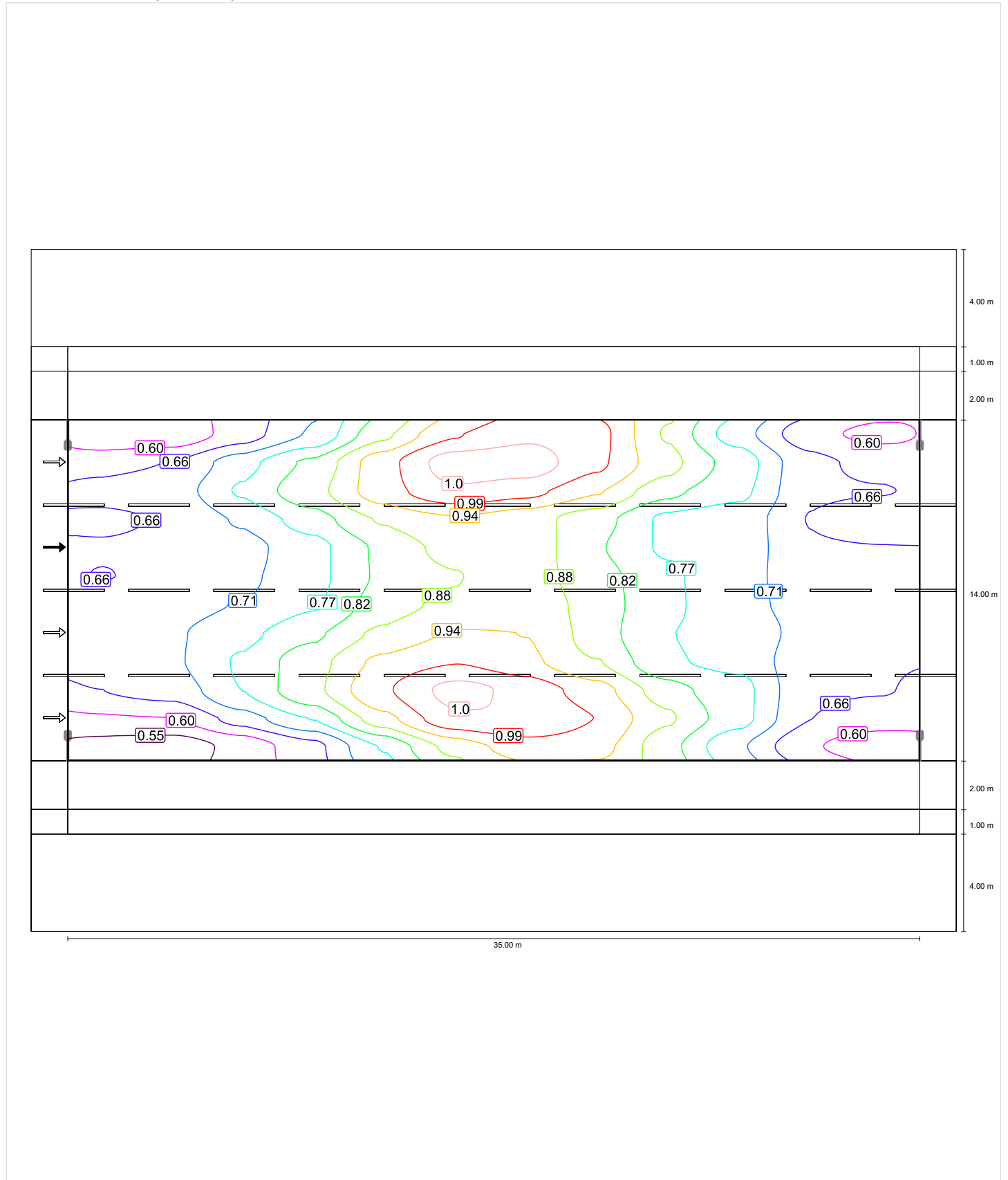


Luminance with new lamp

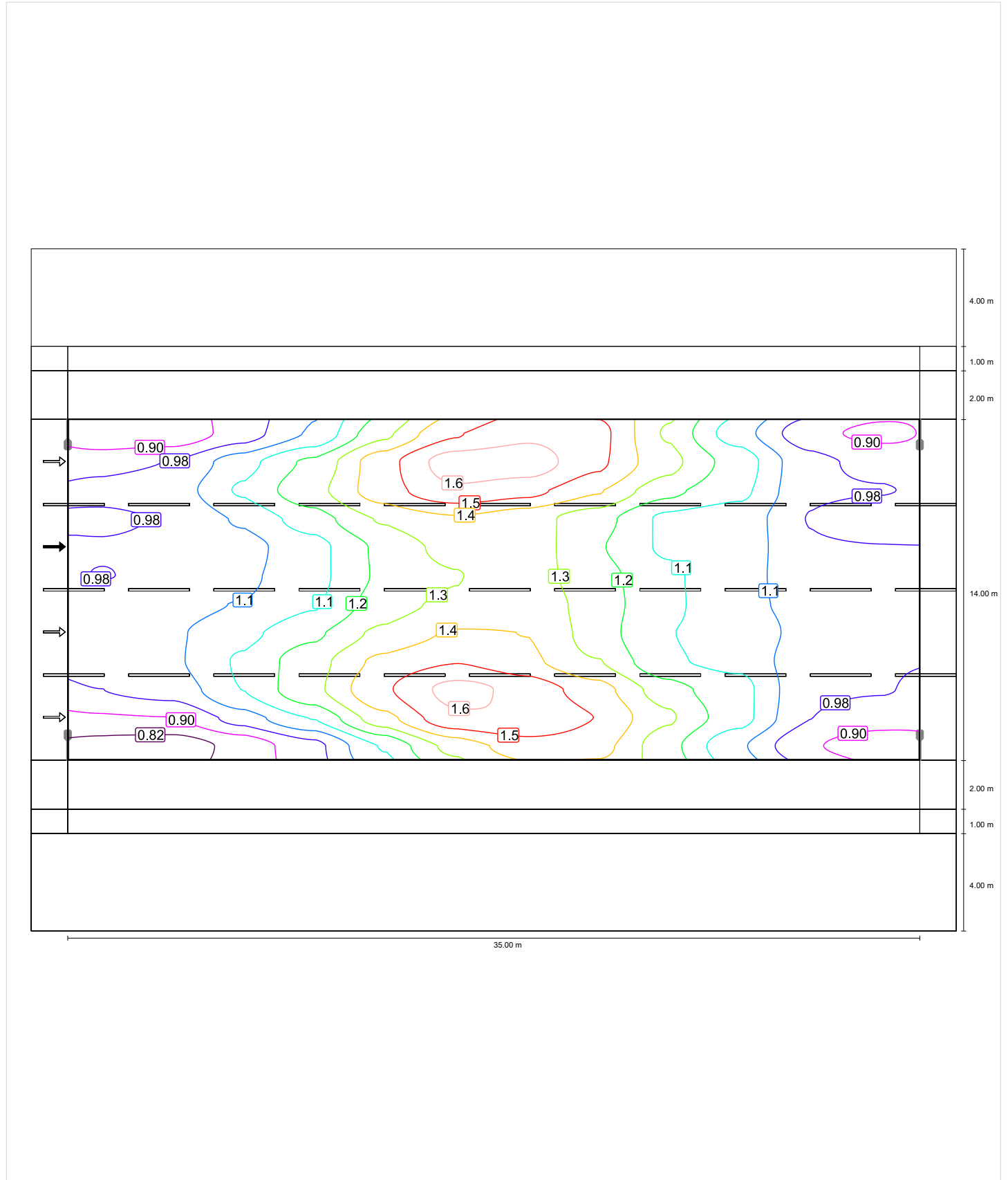


Observer 3

Luminance with dry roadway

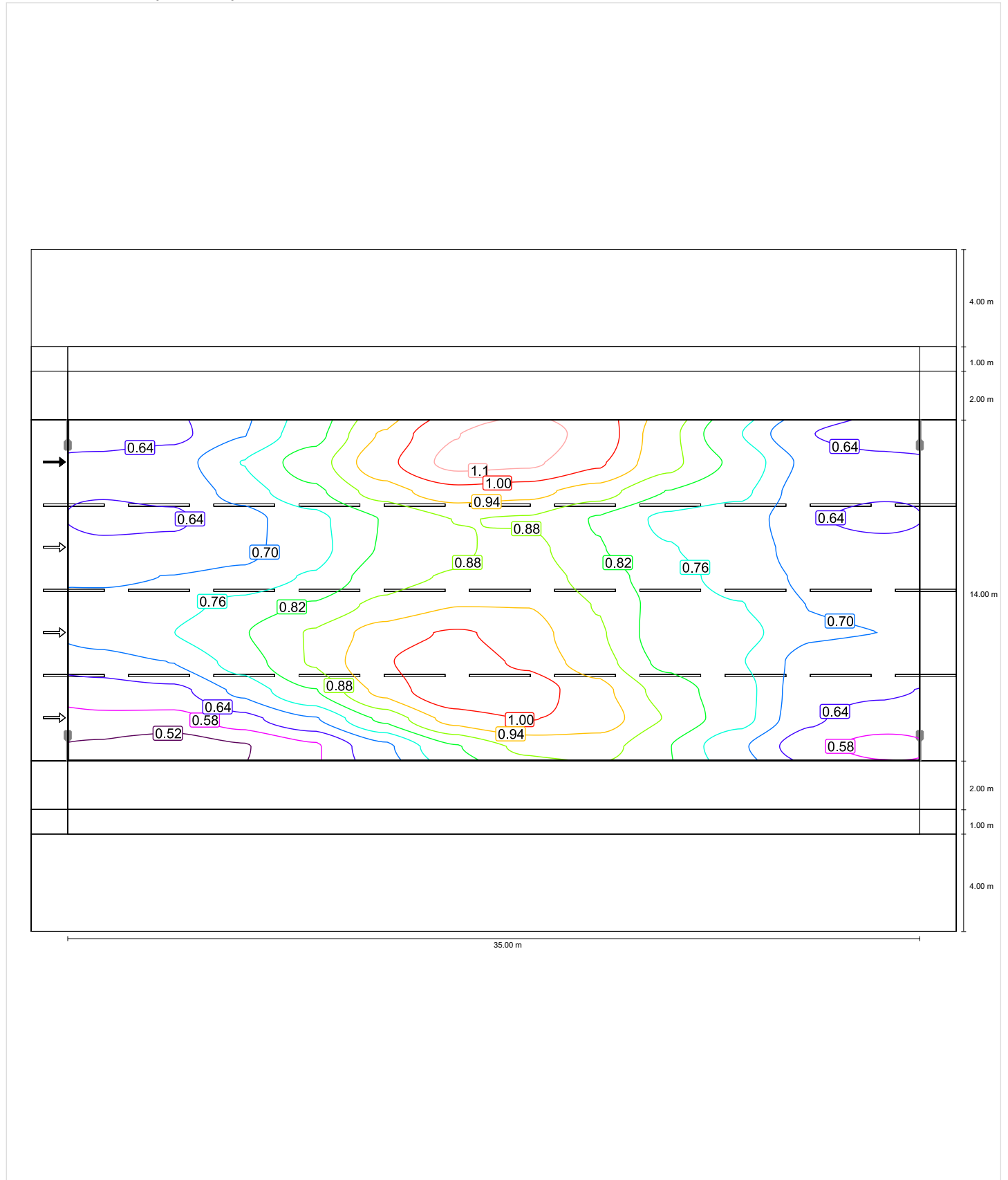


Luminance with new lamp

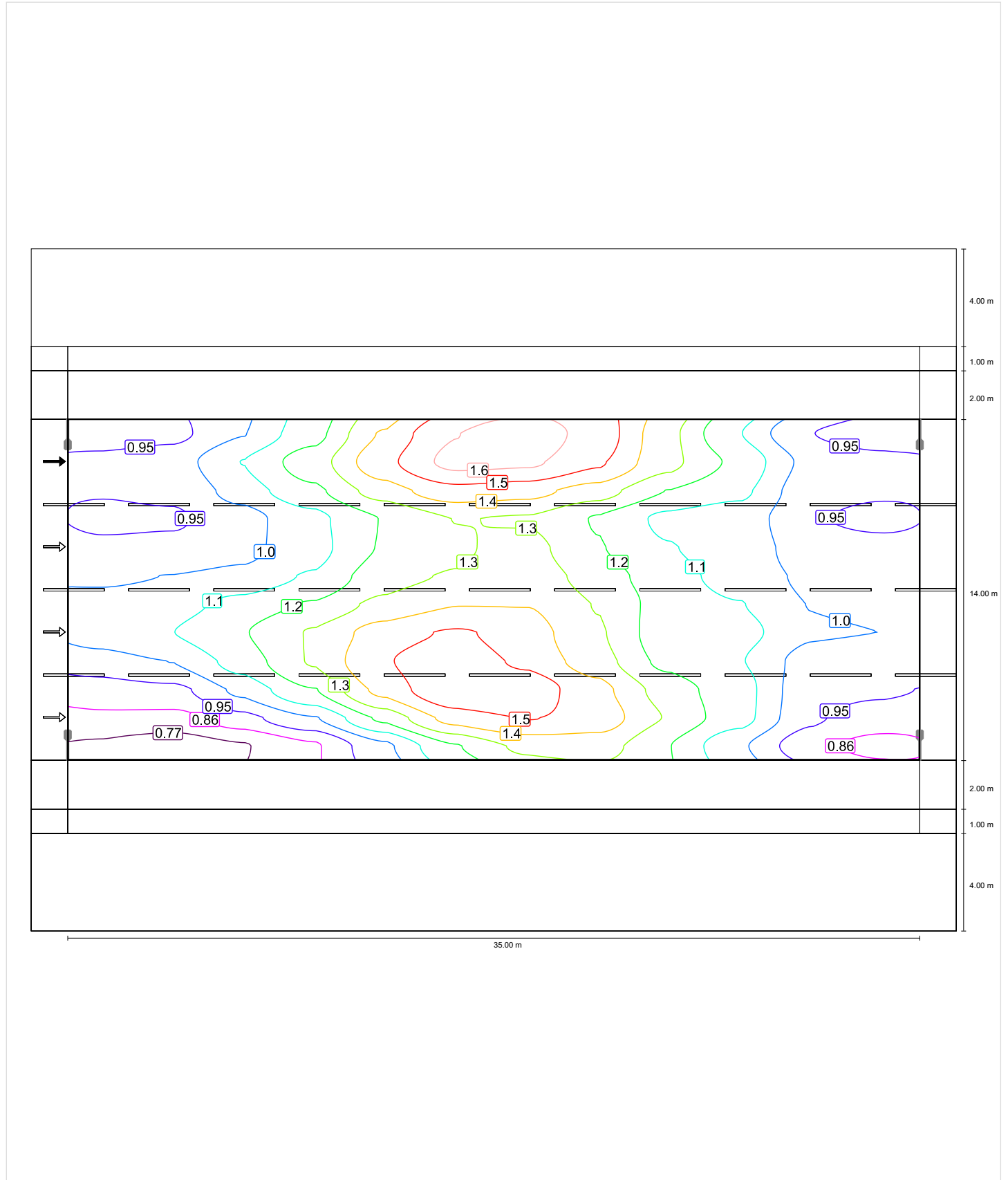


Observer 4

Luminance with dry roadway



Luminance with new lamp



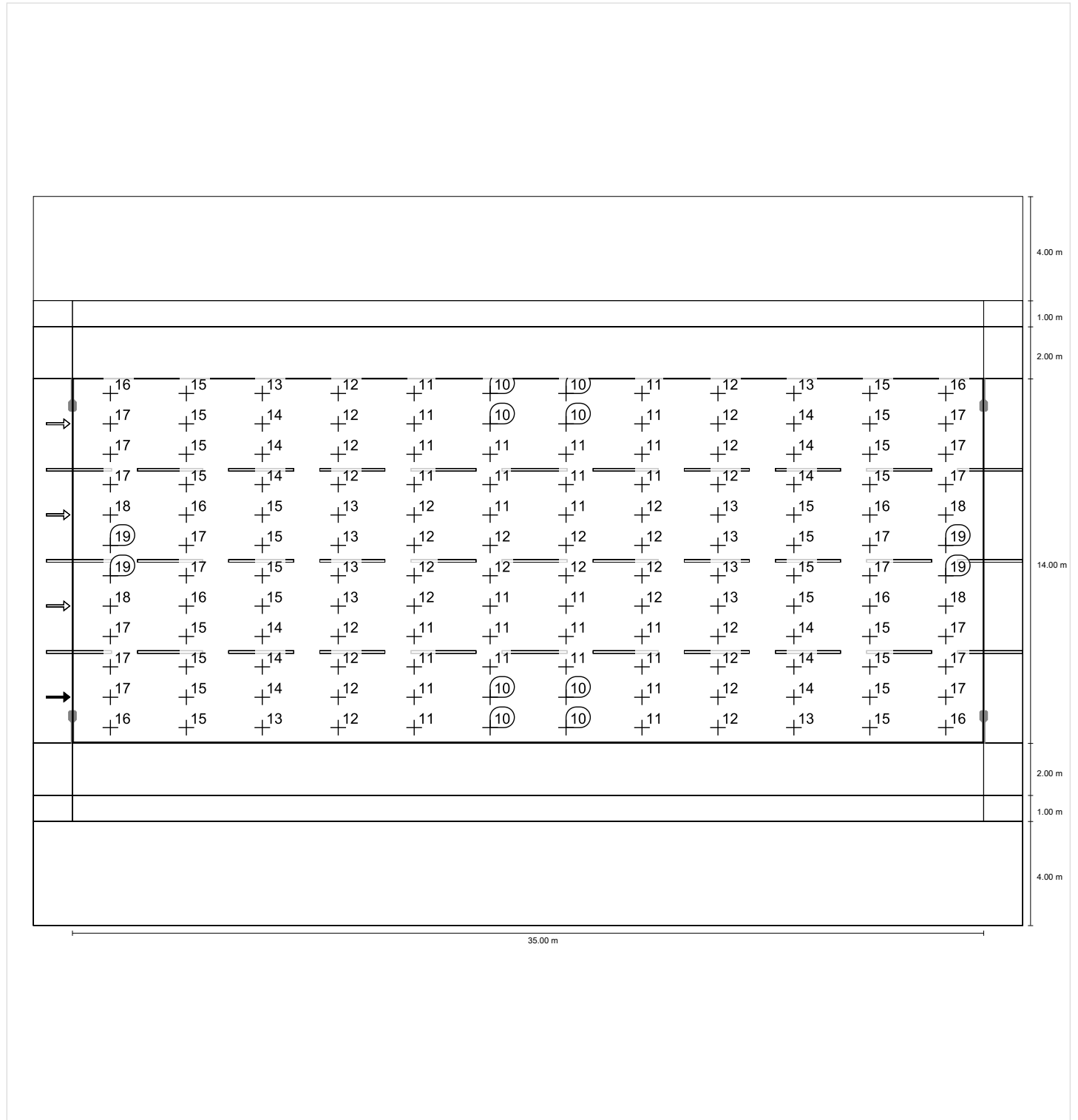
street (M4)

Light loss factor: 0.67
Grid: 12 x 12 Points

Lm [cd/m²] ≥ 0.75	Uo ≥ 0.40	UI ≥ 0.60	TI [%] ≤ 15	EIR
✓ 0.78	✓ 0.62	✓ 0.61	✓ 6	* 0.75

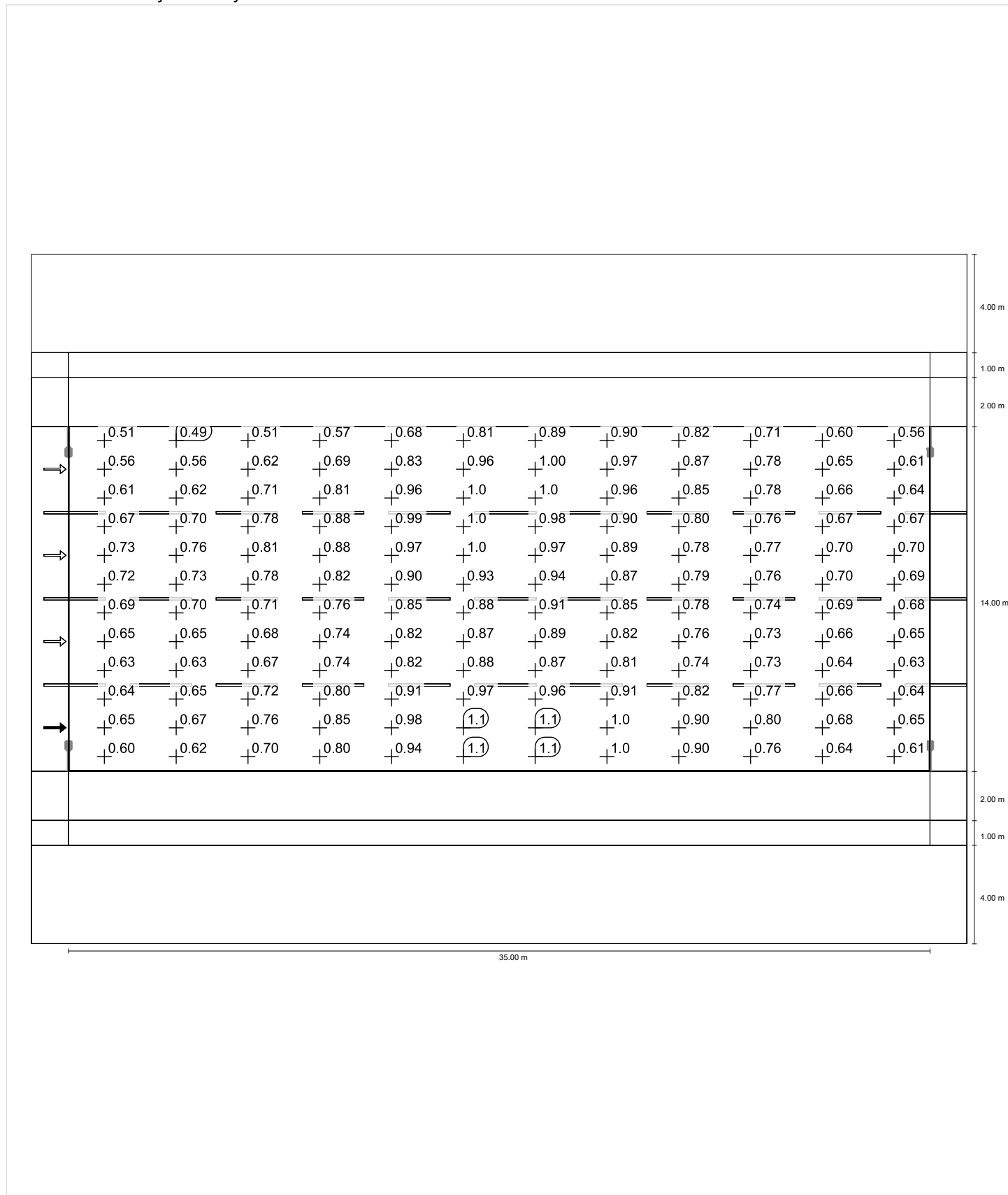
* Informative, not part of the valuation

Horizontal illuminance

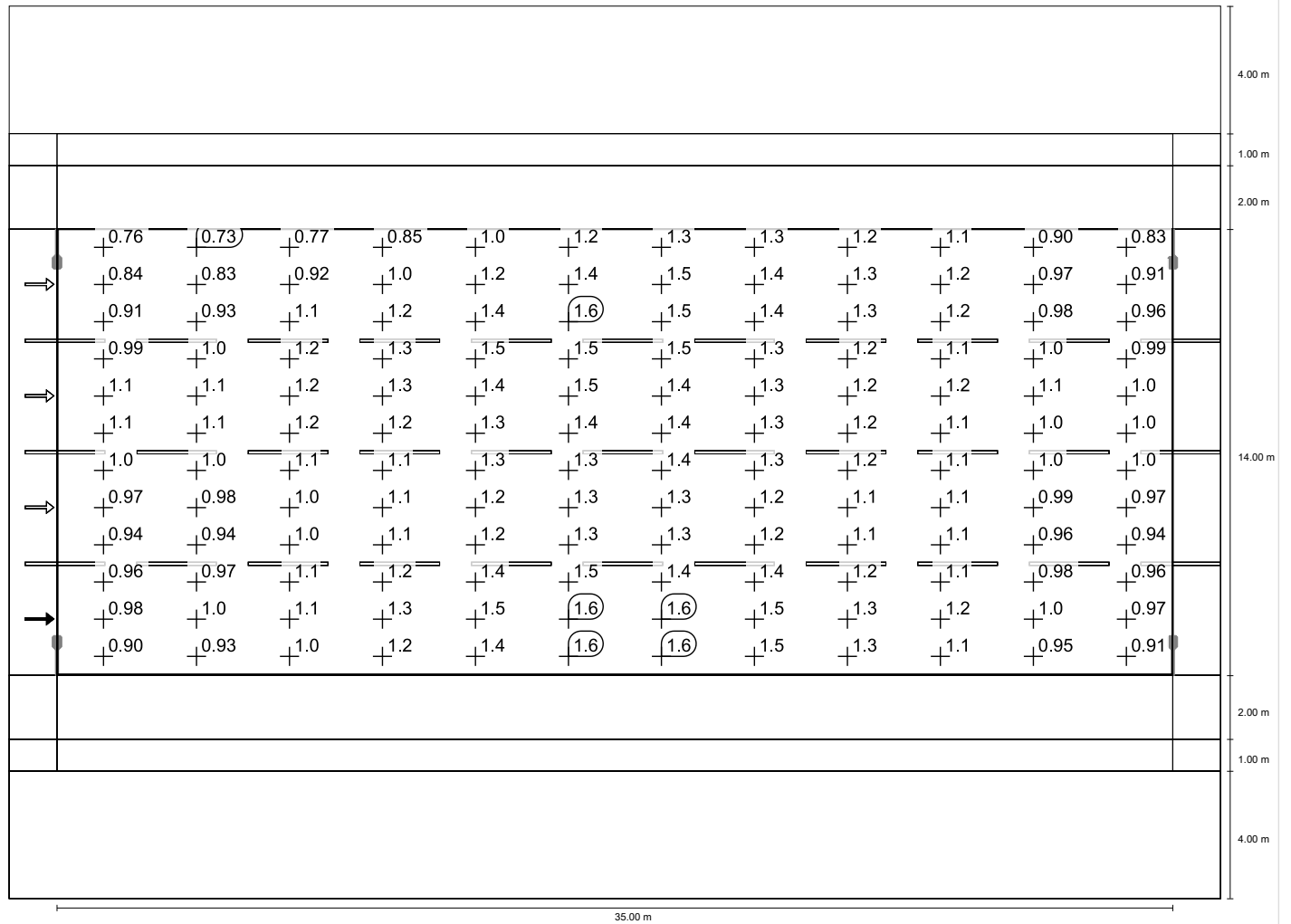


Observer 1

Luminance with dry roadway

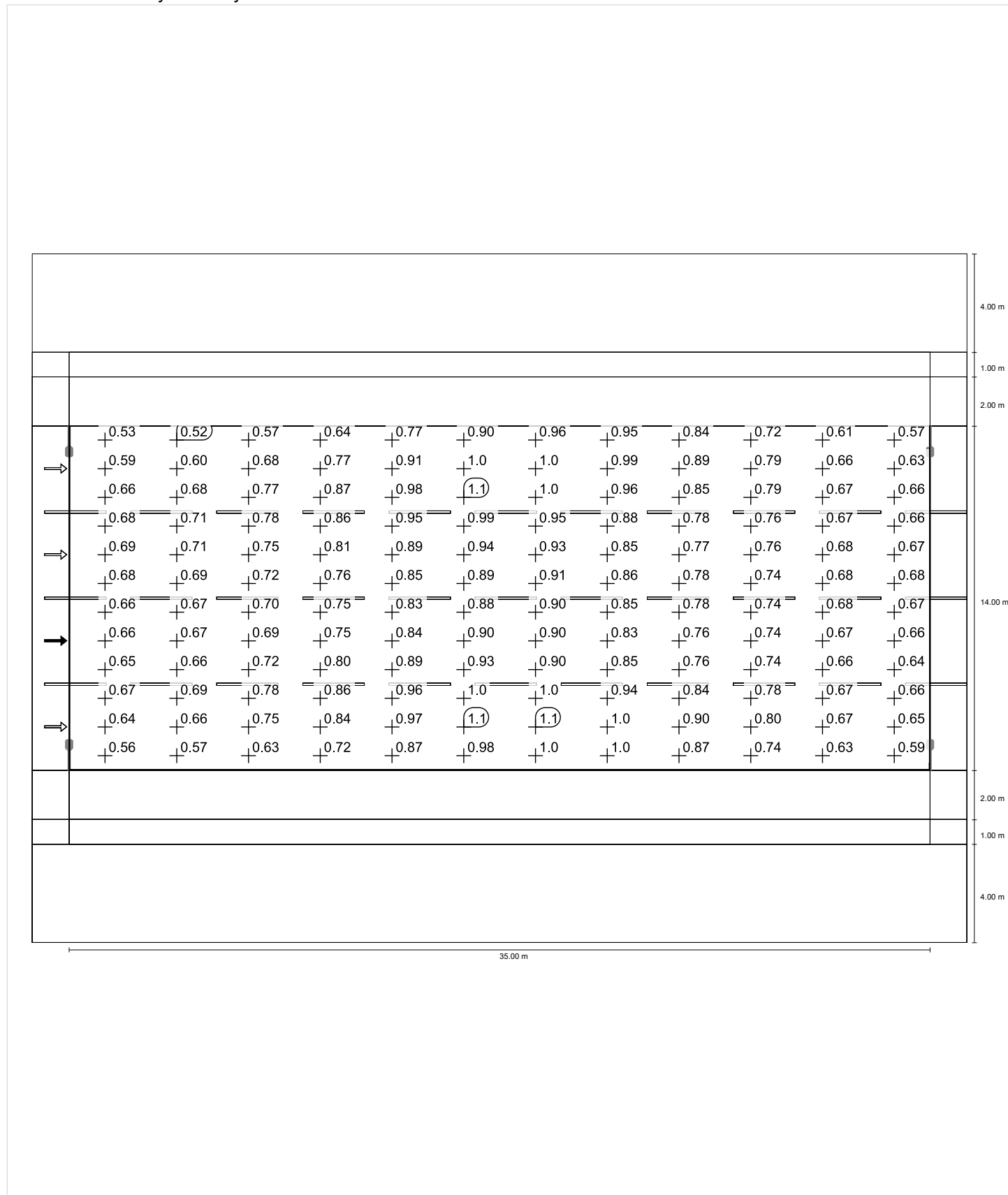


Luminance with new lamp

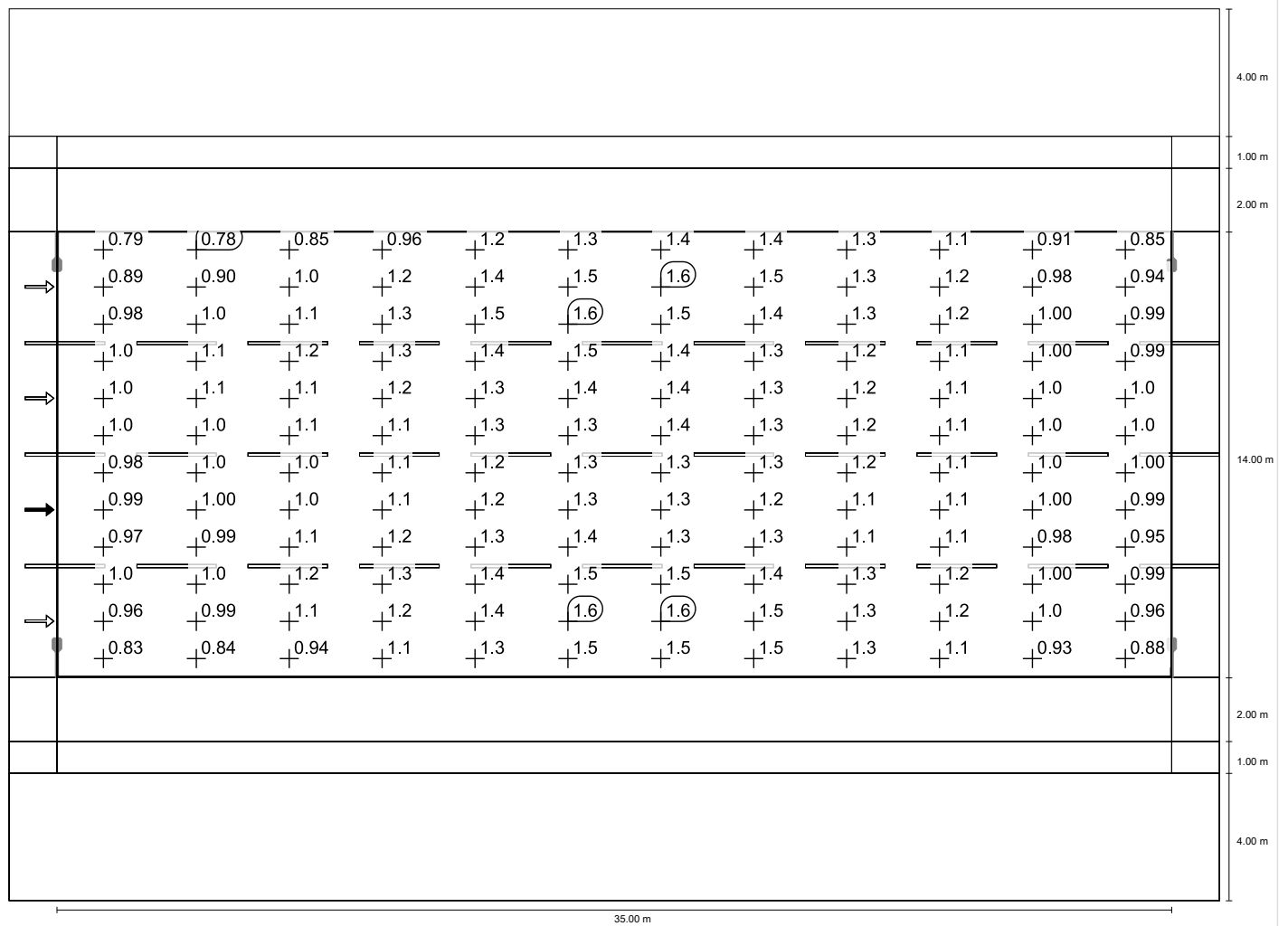


Observer 2

Luminance with dry roadway

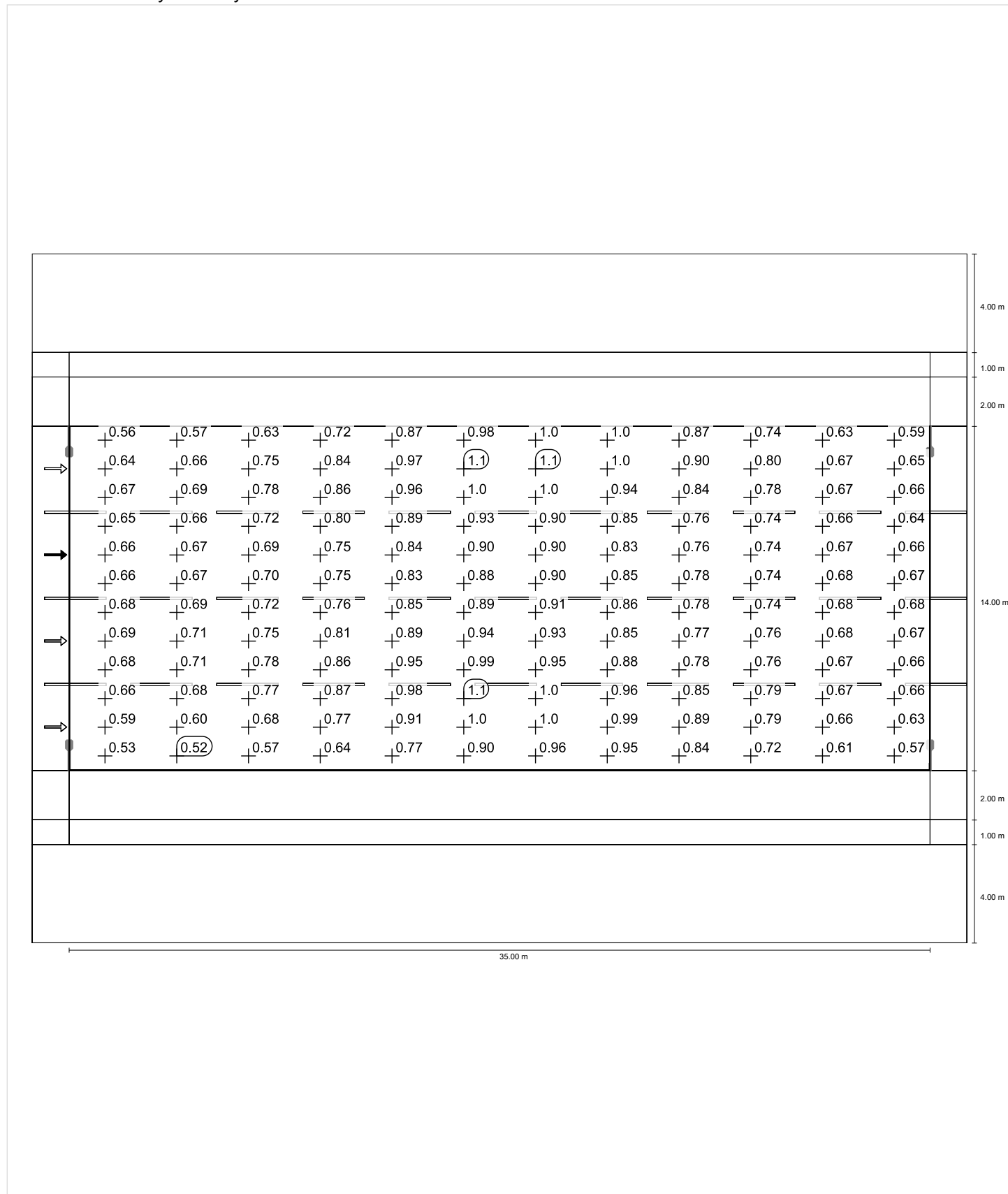


Luminance with new lamp

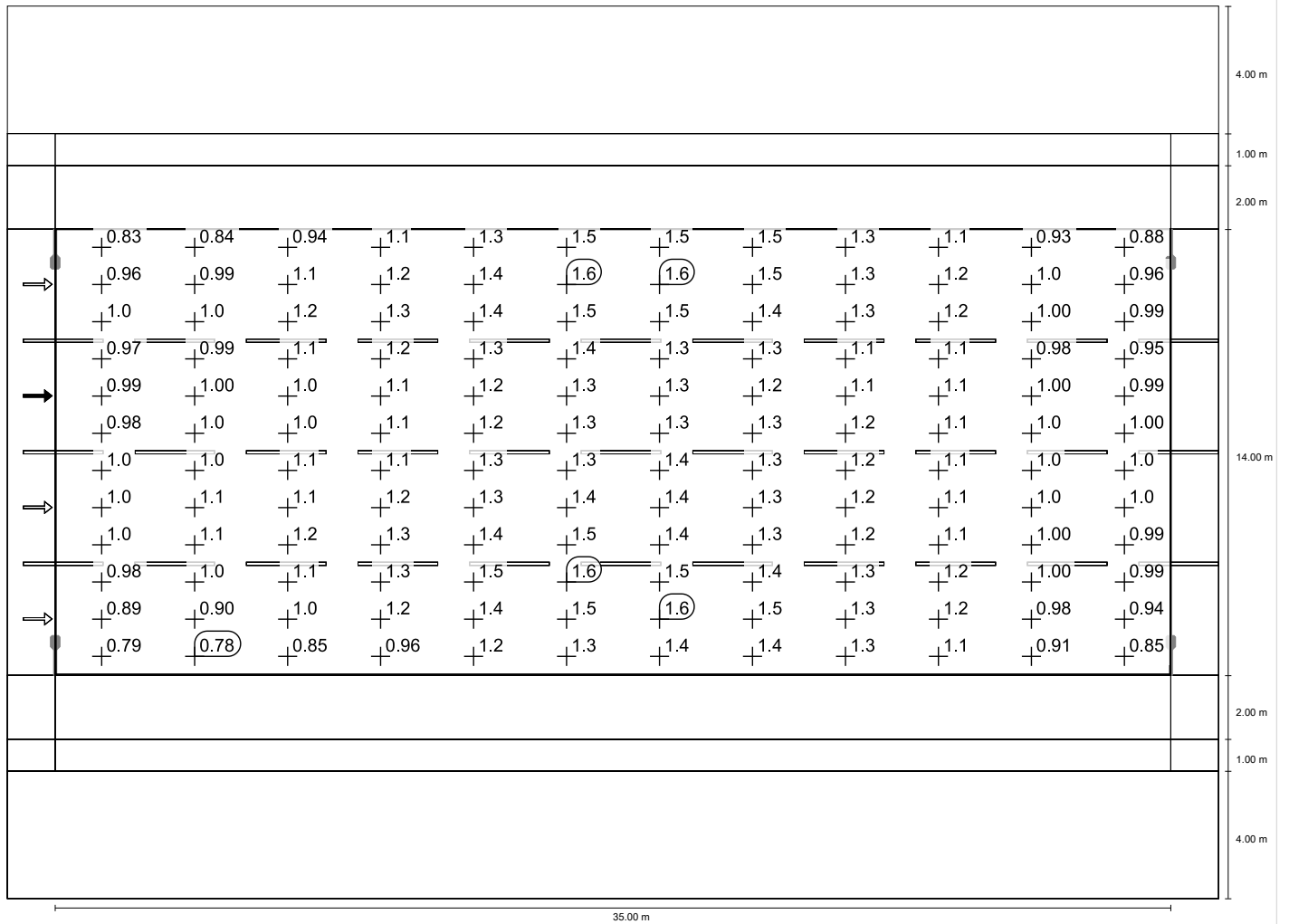


Observer 3

Luminance with dry roadway

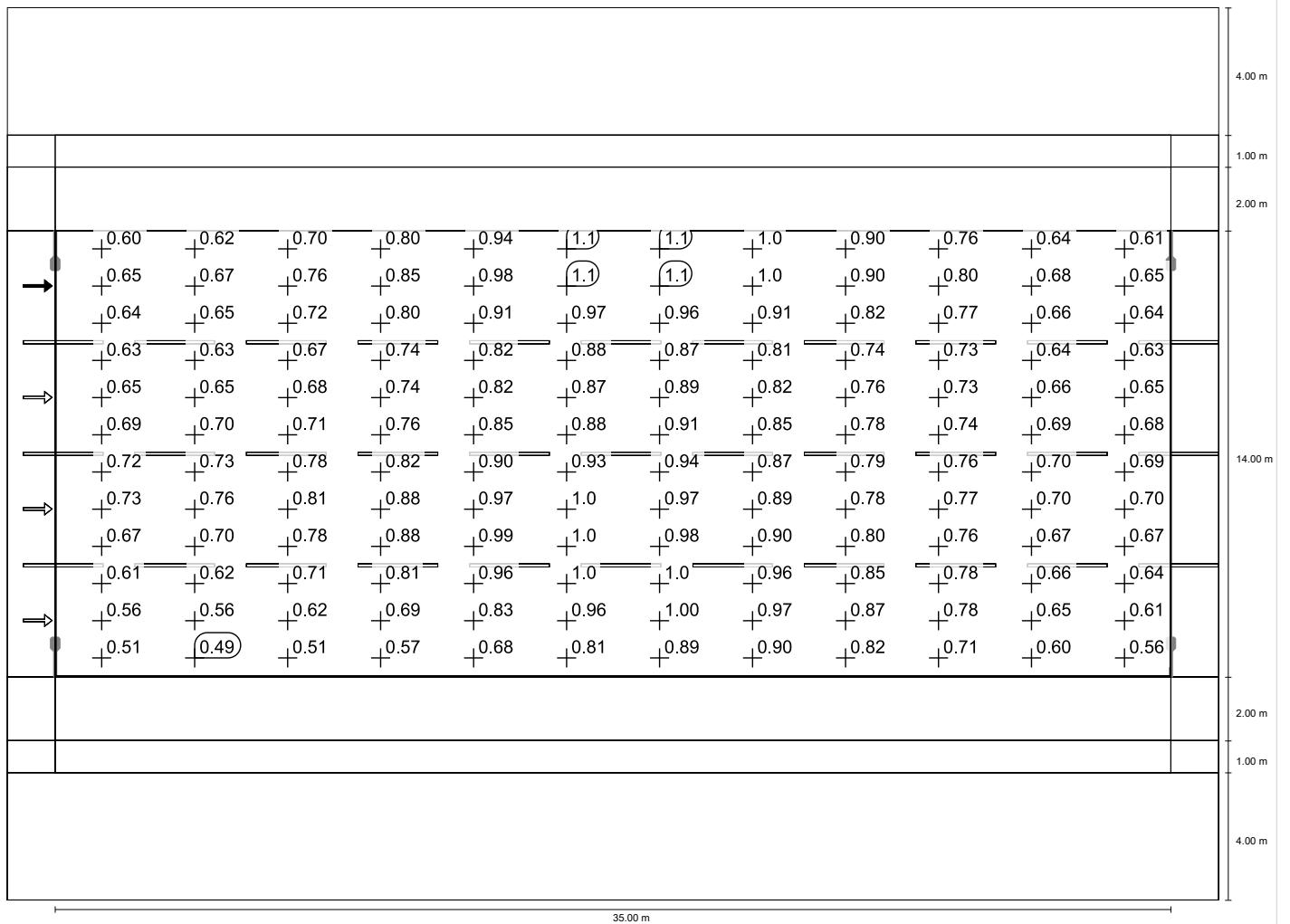


Luminance with new lamp

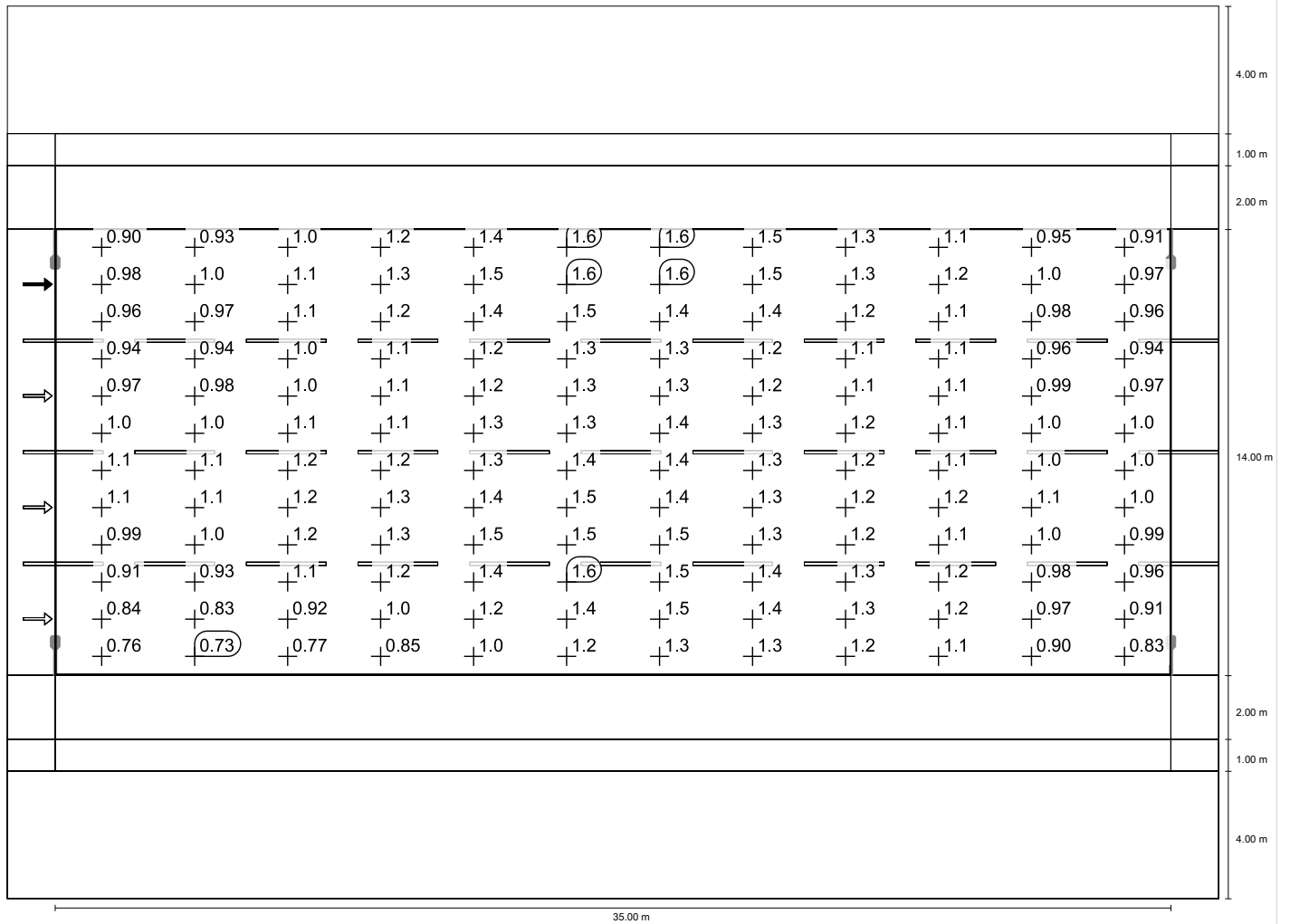


Observer 4

Luminance with dry roadway



Luminance with new lamp



sidewalk-1 (P4)

Light loss factor: 0.67
Grid: 12 x 3 Points

Emin [lx] ≥ 1.00	Em [lx]
✓ 8.60	* 11.08

* Informative, not part of the valuation

sidewalk-1 (P4)

Horizontal illuminance [lx]

6.667	14.9	13.5	12.5	11.0	10.2	9.87	9.87	10.2	11.0	12.5	13.5	14.9
6.000	13.4	12.4	11.6	10.4	9.58	9.37	9.37	9.58	10.4	11.6	12.4	13.4
5.333	11.7	11.1	10.6	9.82	8.88	8.60	8.60	8.88	9.82	10.6	11.1	11.7
m	1.458	4.375	7.292	10.208	13.125	16.042	18.958	21.875	24.792	27.708	30.625	33.542

Grid: 12 x 3 Points

Em [lx]	Emin [lx]	Emax [lx]	g1	g2
11.1	8.60	14.9	0.776	0.576

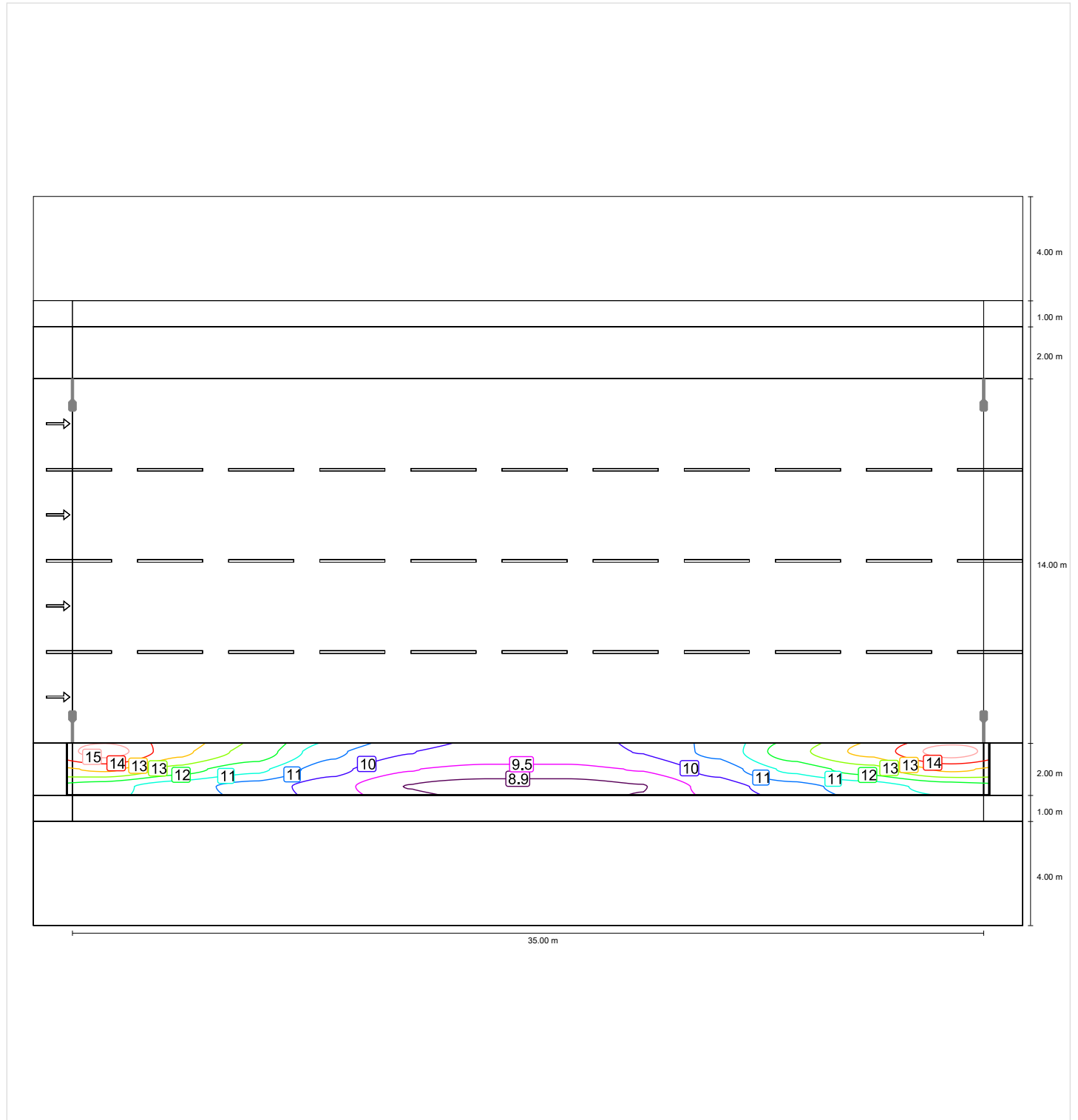
sidewalk-1 (P4)

Light loss factor: 0.67
Grid: 12 x 3 Points

Emin [lx] ≥ 1.00	Em [lx]
✓ 8.60	* 11.08

* Informative, not part of the valuation

Horizontal illuminance



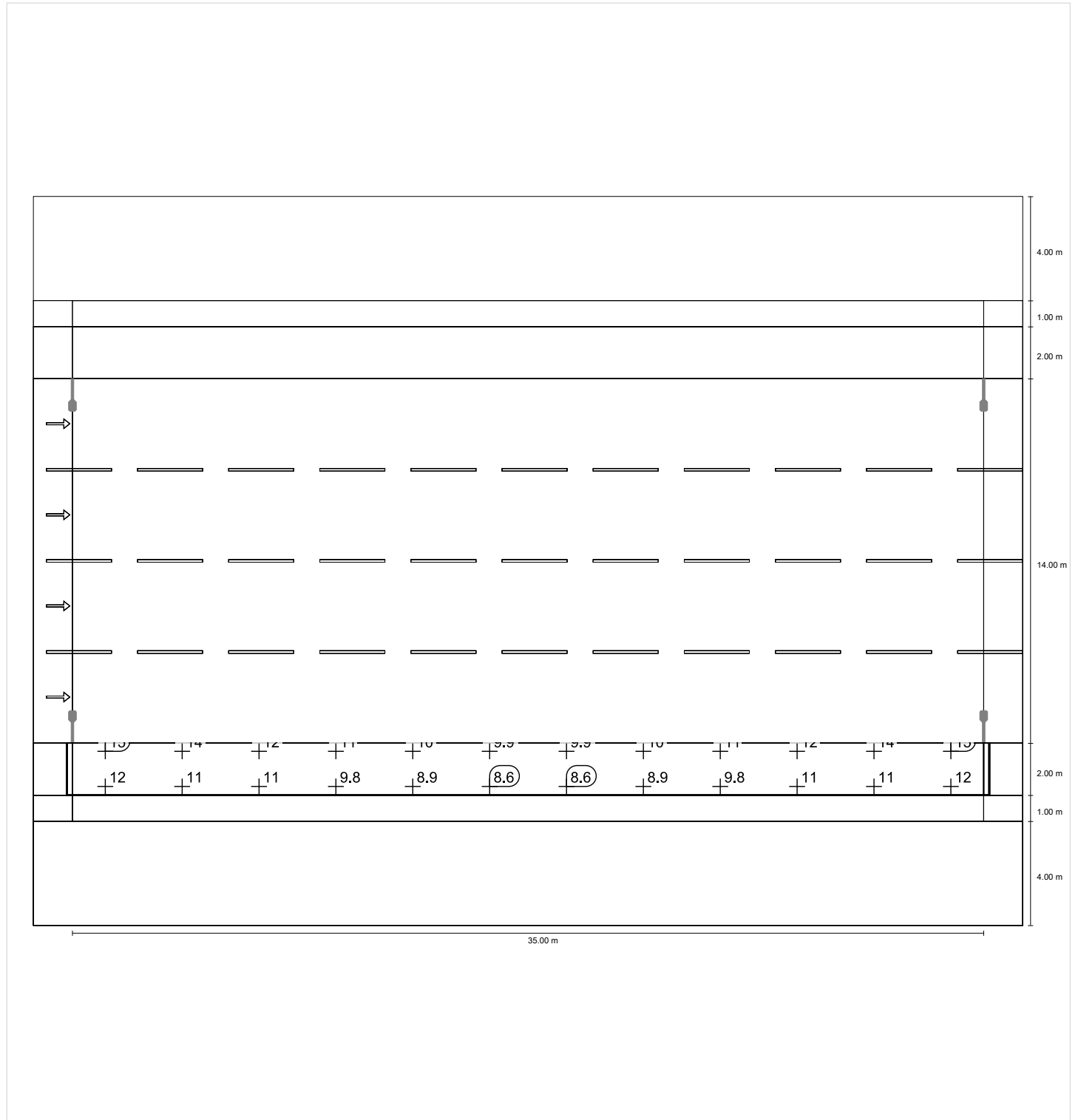
sidewalk-1 (P4)

Light loss factor: 0.67
 Grid: 12 x 3 Points

Emin [lx] ≥ 1.00	Em [lx]
✓ 8.60	* 11.08

* Informative, not part of the valuation

Horizontal illuminance



bikeway-1 (P4)

Light loss factor: 0.67
Grid: 12 x 3 Points

Emin [lx] ≥ 1.00	Em [lx]
✓ 6.77	* 8.64

* Informative, not part of the valuation

bikeway-1 (P4)

Horizontal illuminance [lx]

4.833	10.4	10.0	9.72	9.28	8.27	7.83	7.83	8.27	9.28	9.72	10.0	10.4
4.500	9.58	9.30	9.14	8.75	7.77	7.30	7.30	7.77	8.75	9.14	9.30	9.58
4.167	8.77	8.57	8.50	8.19	7.27	6.77	6.77	7.27	8.19	8.50	8.57	8.77
m	1.458	4.375	7.292	10.208	13.125	16.042	18.958	21.875	24.792	27.708	30.625	33.542

Grid: 12 x 3 Points

Em [lx]	Emin [lx]	Emax [lx]	g1	g2
8.64	6.77	10.4	0.784	0.650

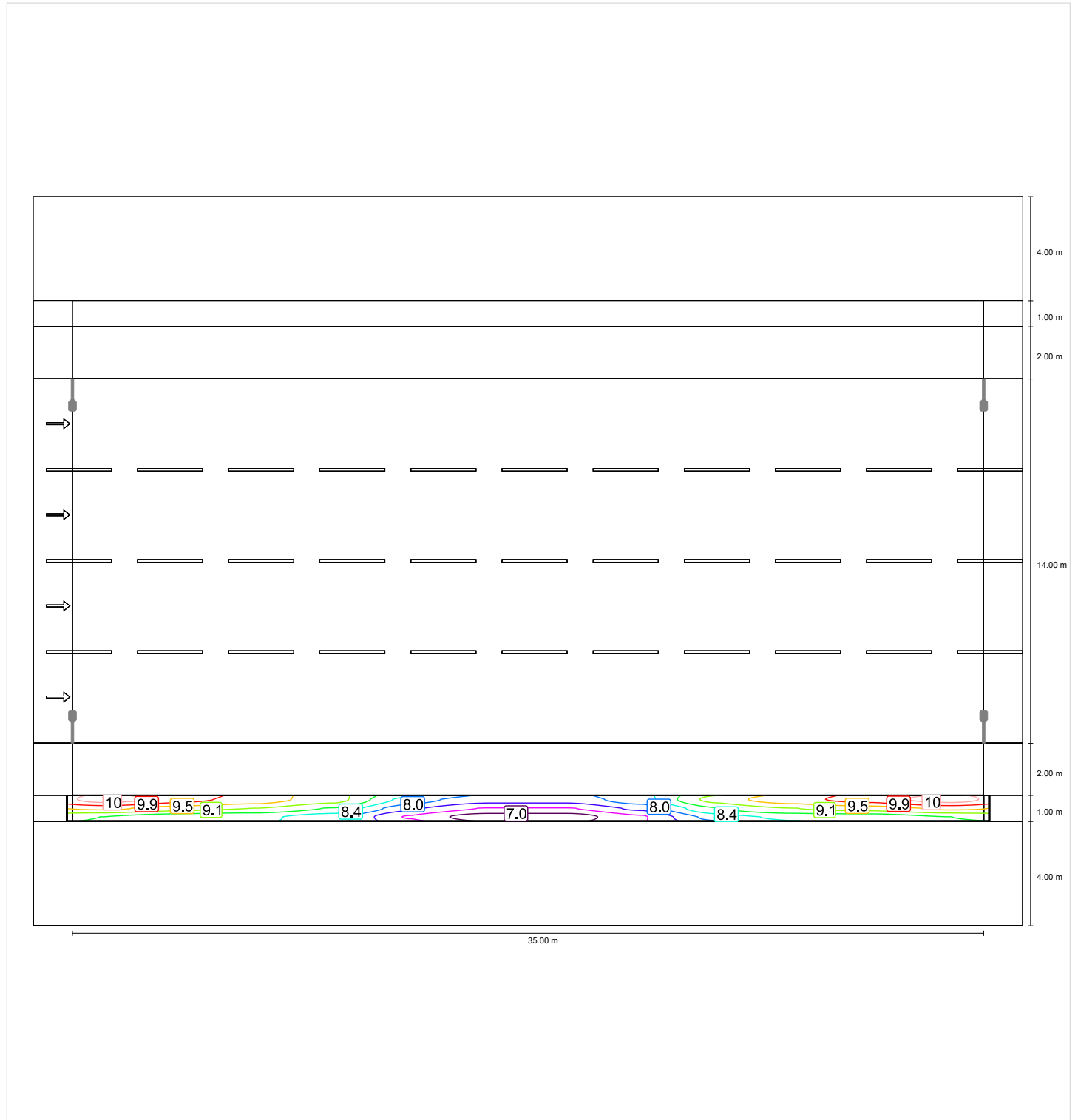
bikeway-1 (P4)

Light loss factor: 0.67
 Grid: 12 x 3 Points

Emin [lx] ≥ 1.00	Em [lx]
✓ 6.77	* 8.64

* Informative, not part of the valuation

Horizontal illuminance



bikeway-1 (P4)

Light loss factor: 0.67
 Grid: 12 x 3 Points

Emin [lx] ≥ 1.00	Em [lx]
✓ 6.77	* 8.64

* Informative, not part of the valuation

Horizontal illuminance

