

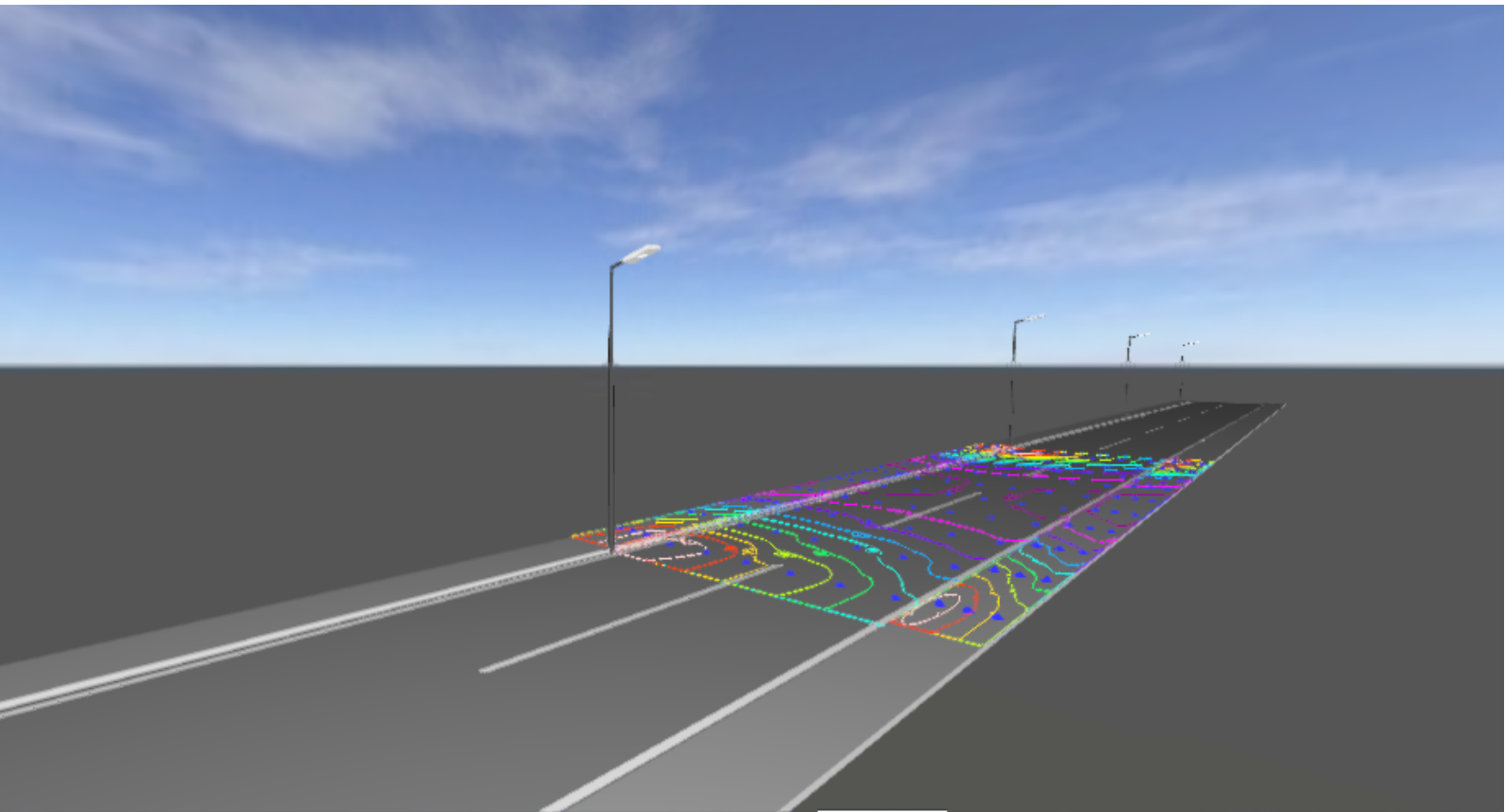
Operator:
Dave

Bosun lighting appliance CO.,Ltd
+86 18676024888
sale@bosunlighting.com

Date:
2020-05-16



BS-180402A-6Module-40w 7M street with 7M pole one side



Content

BS-180402A-6Module-40w 7M street with 7M pole one side

BS-180402A-6Module-40w 7M street with 7M pole one side

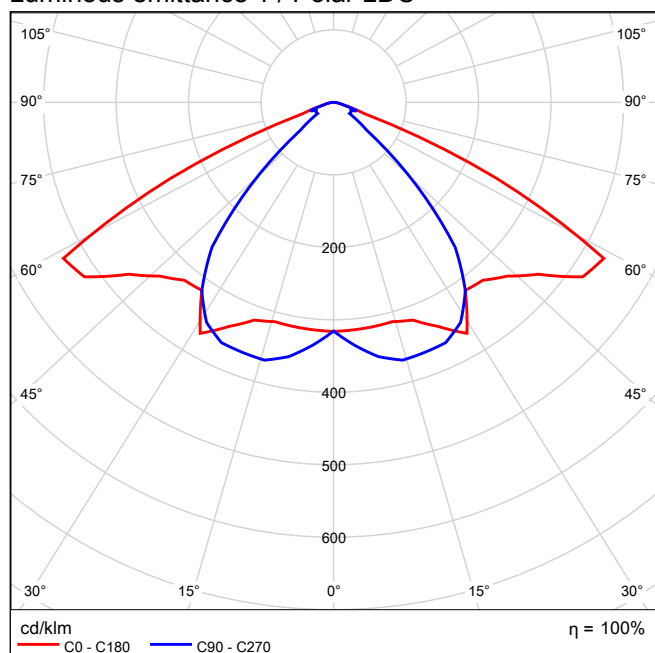
九高 - (1x49).....	3
街道 2: 备选项 2	
Planning results.....	6
街道 2: 备选项 2 / sidewalk (P4)	
Results summary.....	7
Table.....	8
Isolines.....	9
Value chart.....	10
街道 2: 备选项 2 / street (P2)	
Results summary.....	11
Table.....	12
Isolines.....	13
Value chart.....	14
街道 2: 备选项 2 / sidewalk (P4)	
Results summary.....	15
Table.....	16
Isolines.....	17
Value chart.....	18

九高 1x49

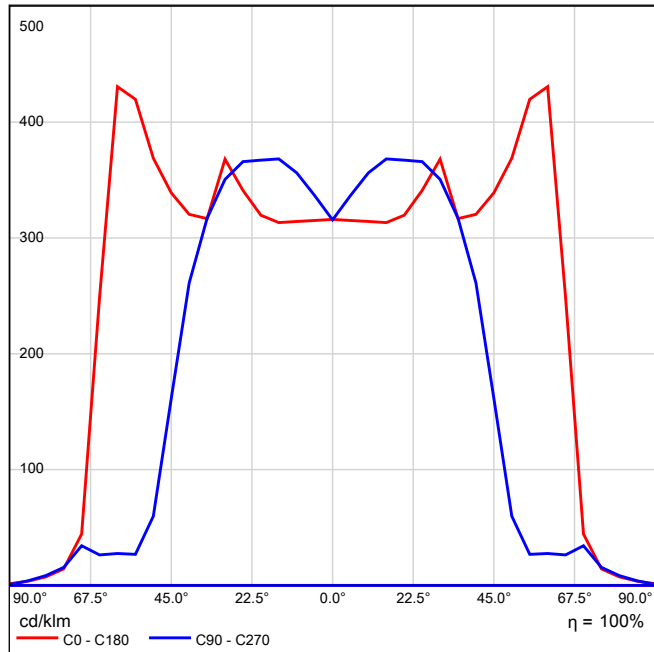
See our luminaire catalog for an image of the luminaire.

Light output ratio: 100.01%
Lamp luminous flux: 6925 lm
Luminaire luminous flux: 6926 lm
Power: 40.0 W
Luminous efficacy: 173.2 lm/W

Luminous emittance 1 / Polar LDC

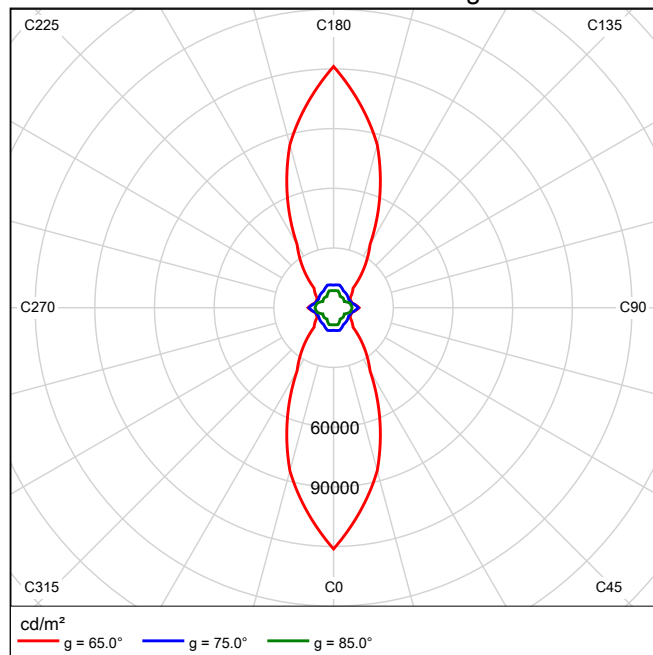


Luminous emittance 1 / Linear LDC



It is not possible to generate a cone diagram, as the light distribution is asymmetrical.

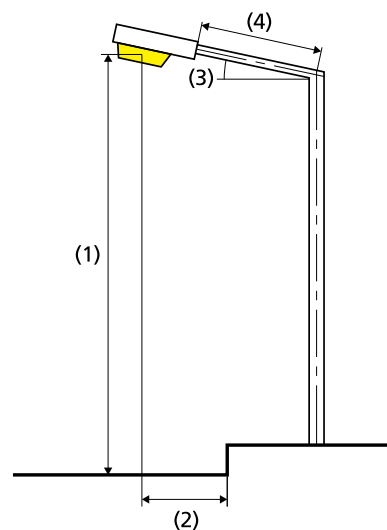
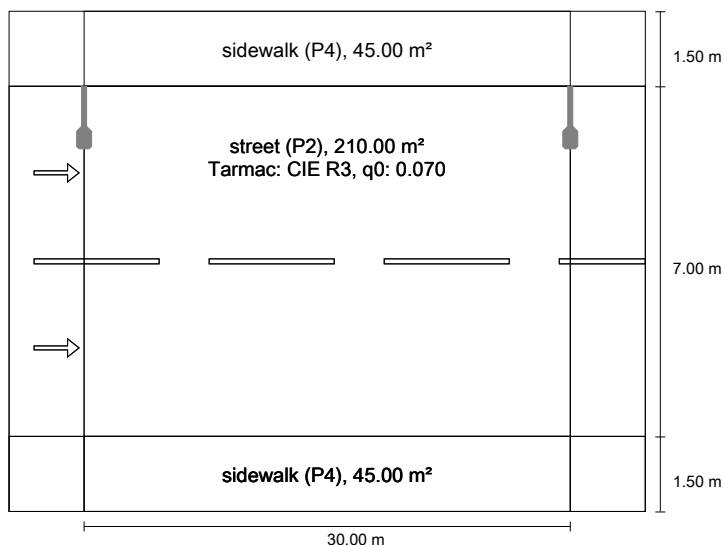
Luminous emittance 1 / Luminance diagram



It is not possible to generate a UGR diagram, as the light distribution is asymmetrical.

街道 2 according to EN 13201:2015

九高



Results for valuation fields
 Maintenance factor: 0.67

sidewalk (P4)

E _{min} [lx] ≥ 1.00	E _m [lx]
✓ 1.33	* 12.66

street (P2)

E _m [lx] ≥ 10.00 ≤ 15.00	E _{min} [lx] ≥ 2.00
✓ 12.29	✓ 2.72

sidewalk (P4)

E _m [lx] ≥ 5.00 ≤ 7.50	E _{min} [lx] ≥ 1.00
✓ 6.95	✓ 2.65

* Informative, not part of the valuation

Results for energy efficiency indicators

Power density indicator (D _p)	0.012 W/lxm ²
Energy consumption density	
Arrangement: BS-AIO-180402A-6Module-40W_IESNA2002.IES (160.0 kWh/yr)	0.5 kWh/m ² yr

Lamp:	1x49
Luminous flux (luminaire):	6926.34 lm
Luminous flux (lamp):	6925.30 lm
Operating Hours	
4000 h:	100.0 %, 40.0 W
W/km:	1319.9
Arrangement:	single side top
Pole distance:	30.000 m
Boom inclination (3):	15.0°
Boom length (4):	1.008 m
Light centre height (1):	7.000 m
Light overhang (2):	1.000 m

ULR:	0.00
ULOR:	0.00
Maximum luminous intensities	
at 70° and above	165 cd/klm *
at 80° and above	34.2 cd/klm *
at 90° and above	15.6 cd/klm *
Luminous intensity class:	G*3

Any direction forming the specified angle from the downward vertical, with the luminaire installed for use.

* Luminous intensity values in [cd/klm] for calculating luminous intensity class refer to the output flux of the luminaire, according EN 13201:2015.

Arrangement complies with glare index class D.6

sidewalk (P4)

Maintenance factor: 0.67
Grid: 10 x 3 Points

Emin [lx] ≥ 1.00	Em [lx]
✓ 1.33	* 12.66

* Informative, not part of the valuation

sidewalk (P4)

Horizontal illuminance [lx]

9.750	26.5	17.2	8.50	3.52	1.33	1.33	3.52	8.50	17.2	26.5
9.250	29.4	18.9	9.56	4.26	1.62	1.62	4.26	9.56	18.9	29.4
8.750	31.5	20.2	10.5	4.99	1.96	1.96	4.99	10.5	20.2	31.5
m	1.500	4.500	7.500	10.500	13.500	16.500	19.500	22.500	25.500	28.500

Grid: 10 x 3 Points

Em [lx]	Emin [lx]	Emax [lx]	g1	g2
12.7	1.33	31.5	0.105	0.042

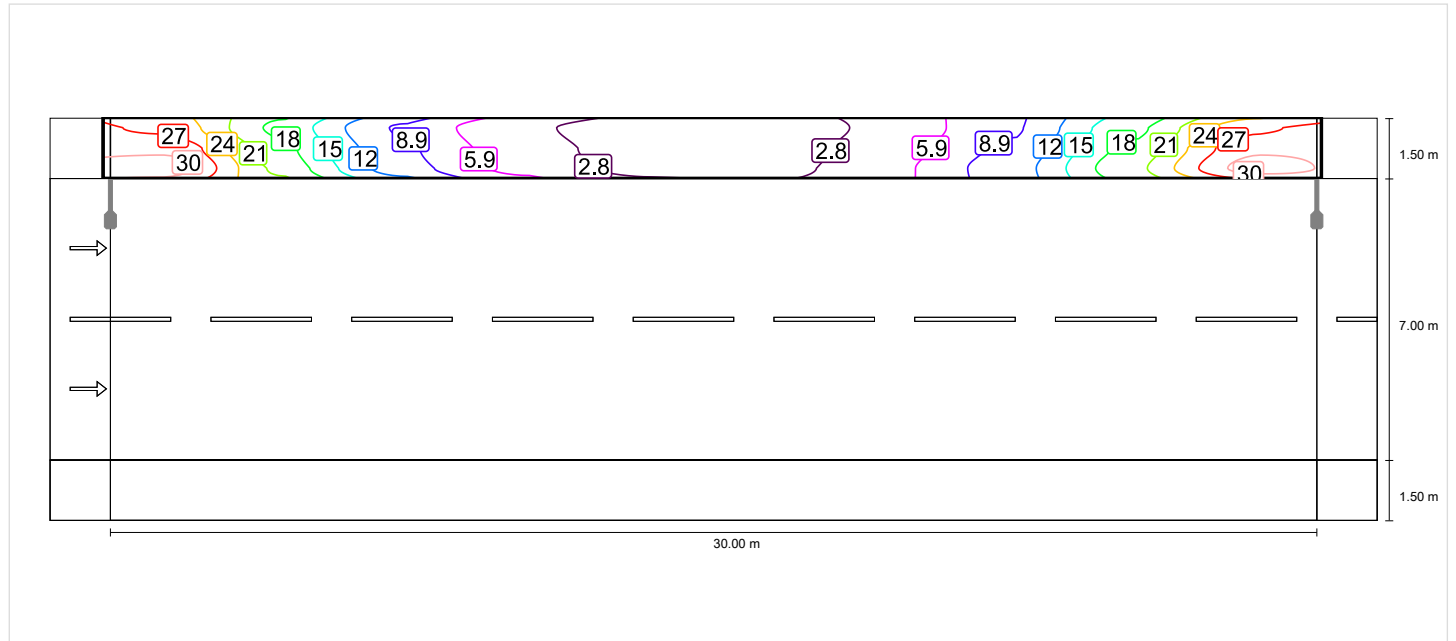
sidewalk (P4)

Maintenance factor: 0.67
 Grid: 10 x 3 Points

Emin [lx] ≥ 1.00	Em [lx]
✓ 1.33	* 12.66

* Informative, not part of the valuation

Horizontal illuminance



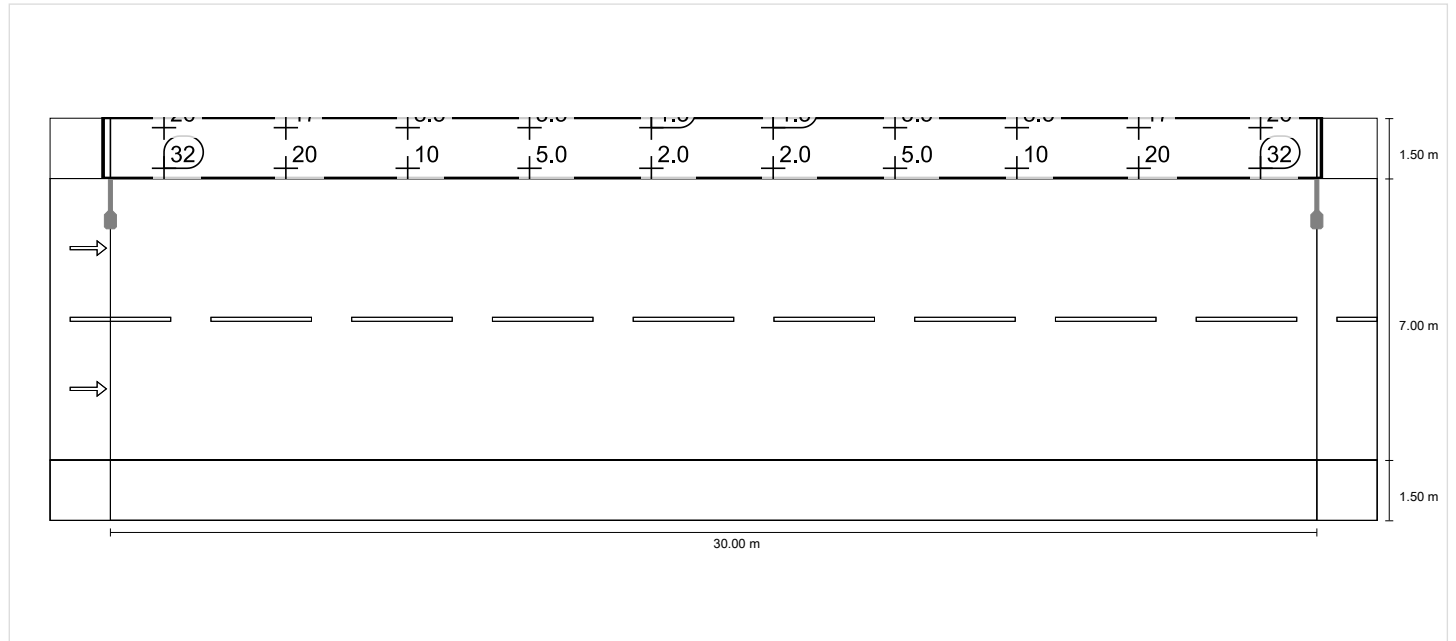
sidewalk (P4)

Maintenance factor: 0.67
 Grid: 10 x 3 Points

Emin [lx] ≥ 1.00	Em [lx]
✓ 1.33	* 12.66

* Informative, not part of the valuation

Horizontal illuminance



street (P2)

Maintenance factor: 0.67
Grid: 10 x 6 Points

Em [lx] ≥ 10.00 ≤ 15.00	Emin [lx] ≥ 2.00
✓ 12.29	✓ 2.72

street (P2)

Horizontal illuminance [lx]

7.917	32.3	20.4	11.4	5.84	2.72	2.72	5.84	11.4	20.4	32.3
6.750	30.7	19.8	11.0	6.51	3.59	3.59	6.51	11.0	19.8	30.7
5.583	25.2	18.3	9.95	6.78	4.40	4.40	6.78	9.95	18.3	25.2
4.417	24.1	17.2	9.59	6.19	4.31	4.31	6.19	9.59	17.2	24.1
3.250	20.6	14.5	8.92	5.60	4.03	4.03	5.60	8.92	14.5	20.6
2.083	16.4	12.1	7.76	4.90	3.57	3.57	4.90	7.76	12.1	16.4
m	1.500	4.500	7.500	10.500	13.500	16.500	19.500	22.500	25.500	28.500

Grid: 10 x 6 Points

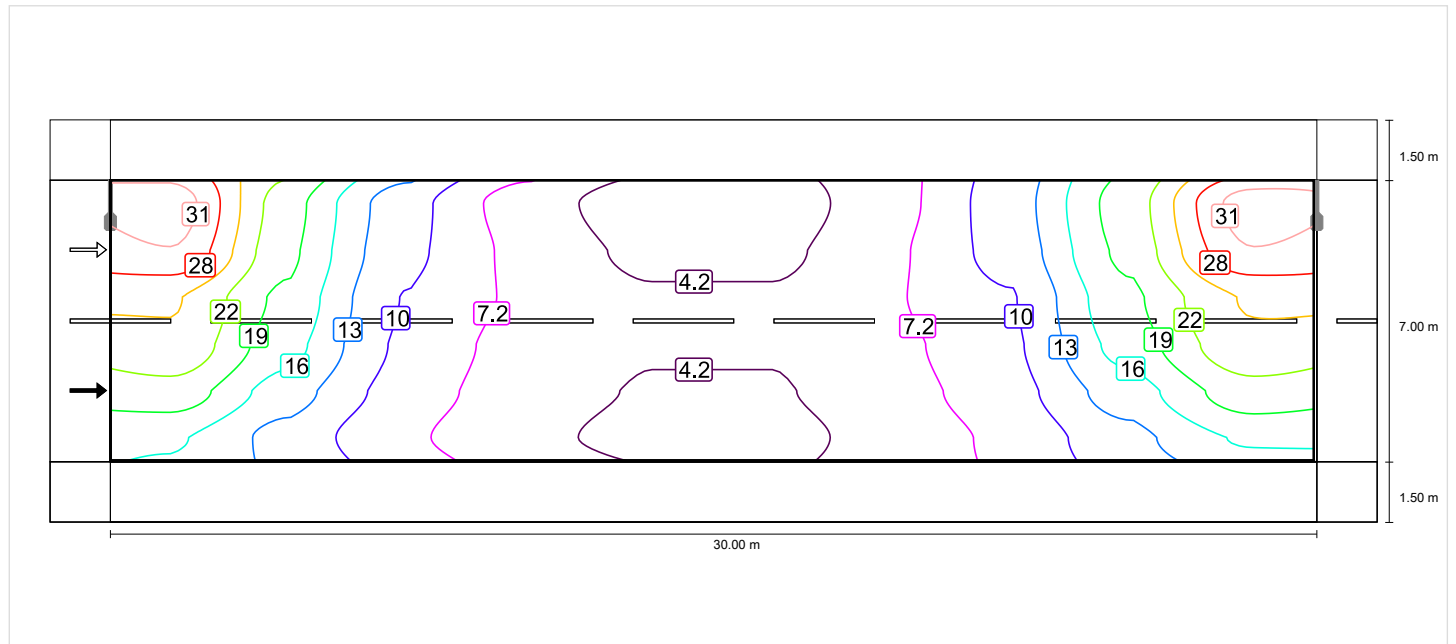
Em [lx]	Emin [lx]	Emax [lx]	g1	g2
12.3	2.72	32.3	0.221	0.084

street (P2)

Maintenance factor: 0.67
Grid: 10 x 6 Points

Em [lx]	Emin [lx]
≥ 10.00	≥ 2.00
≤ 15.00	
✓ 12.29	✓ 2.72

Horizontal illuminance

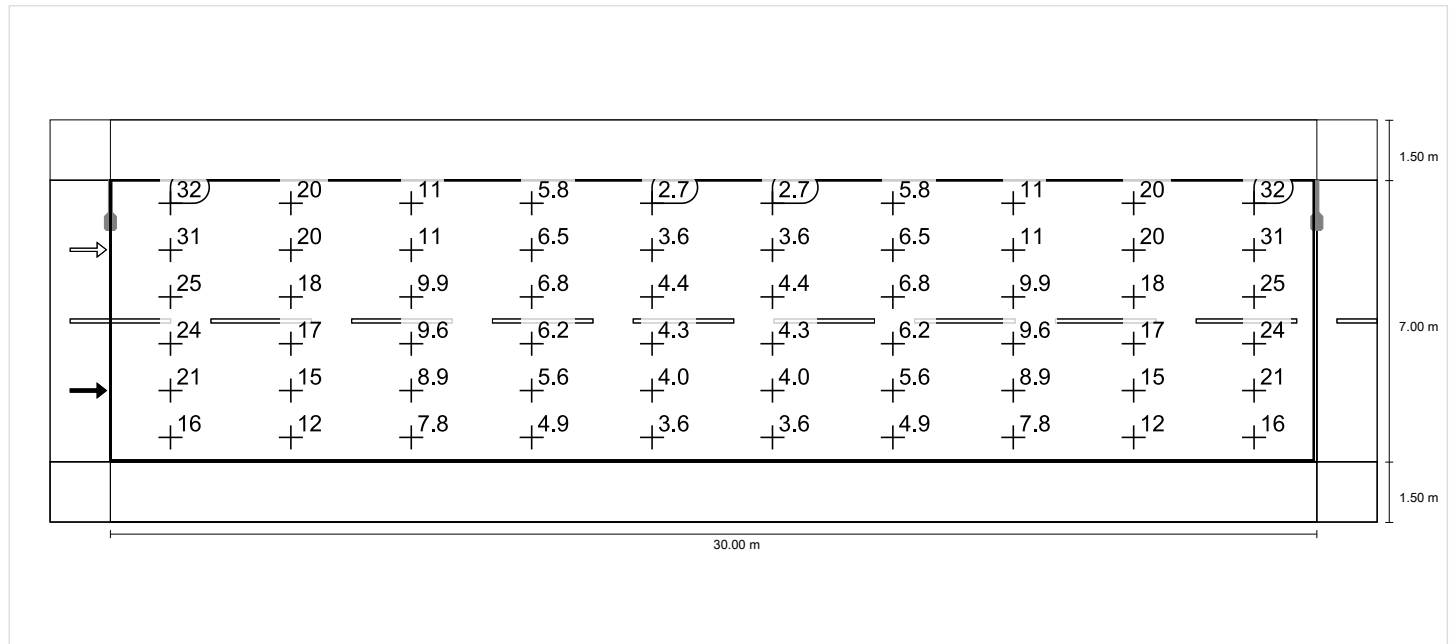


street (P2)

Maintenance factor: 0.67
 Grid: 10 x 6 Points

Em [lx]	Emin [lx]
≥ 10.00	≥ 2.00
≤ 15.00	
✓ 12.29	✓ 2.72

Horizontal illuminance



sidewalk (P4)

Maintenance factor: 0.67
Grid: 10 x 3 Points

Em [lx] ≥ 5.00 ≤ 7.50	Emin [lx] ≥ 1.00
✓ 6.95	✓ 2.65

sidewalk (P4)

Horizontal illuminance [lx]

1.250	13.8	10.5	6.87	4.28	3.10	3.10	4.28	6.87	10.5	13.8
0.750	12.2	9.46	6.24	3.96	2.87	2.87	3.96	6.24	9.46	12.2
0.250	10.6	8.43	5.63	3.65	2.65	2.65	3.65	5.63	8.43	10.6
m	1.500	4.500	7.500	10.500	13.500	16.500	19.500	22.500	25.500	28.500

Grid: 10 x 3 Points

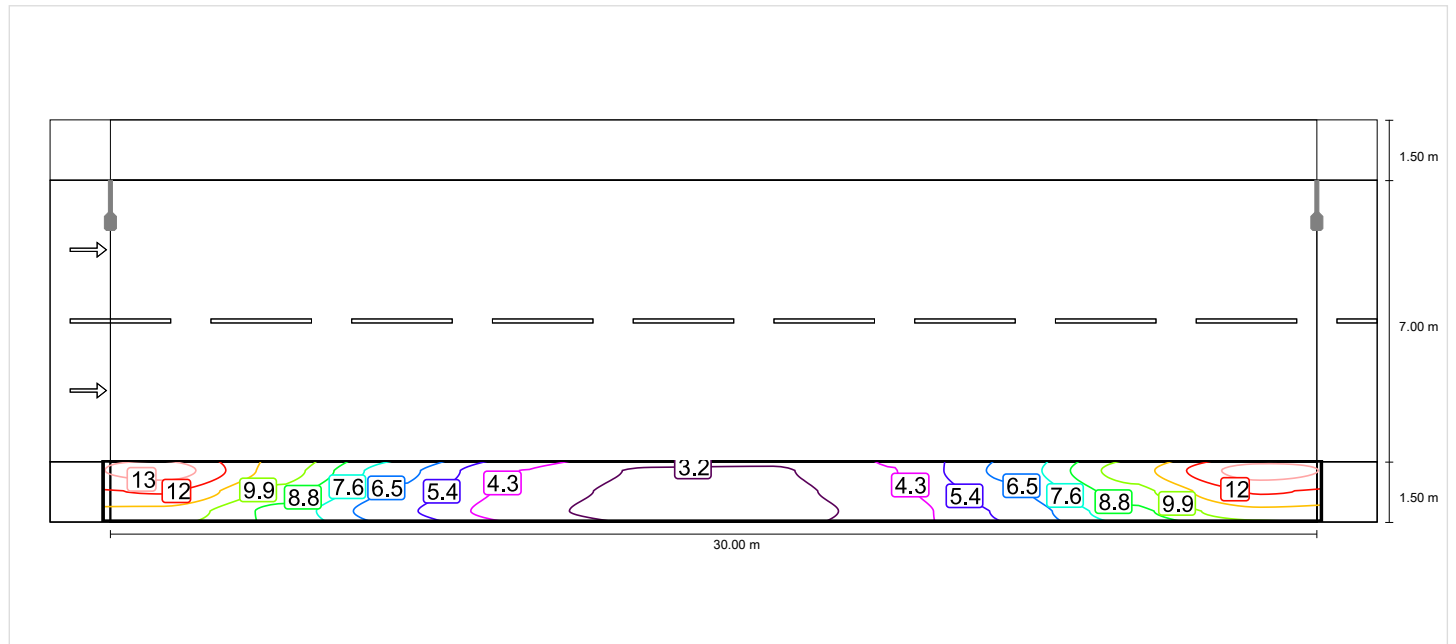
Em [lx]	Emin [lx]	Emax [lx]	g1	g2
6.95	2.65	13.8	0.381	0.192

sidewalk (P4)

Maintenance factor: 0.67
 Grid: 10 x 3 Points

Em [lx]	Emin [lx]
≥ 5.00	≥ 1.00
≤ 7.50	
✓ 6.95	✓ 2.65

Horizontal illuminance



sidewalk (P4)

Maintenance factor: 0.67
 Grid: 10 x 3 Points

Em [lx]	Emin [lx]
≥ 5.00	≥ 1.00
≤ 7.50	
✓ 6.95	✓ 2.65

Horizontal illuminance

